

Product datasheet for **TA347660**

Zinc finger protein 682 (ZNF682) Rabbit Polyclonal Antibody

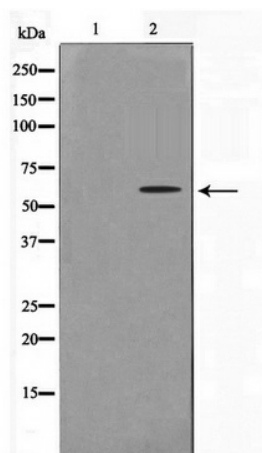
Product data:

Product Type:	Primary Antibodies
Applications:	WB
Recommended Dilution:	WB: 1:500-1:2000
Reactivity:	Human
Host:	Rabbit
Isotype:	IgG
Clonality:	Polyclonal
Immunogen:	The immunogen for anti-ZNF682 Antibody: A synthesized peptide derived from human ZNF682
Formulation:	Rabbit IgG in phosphate buffered saline , pH 7.4, 150mM NaCl, 0.02% sodium azide and 50% glycerol. Store at -20?. Stable for 12 months from date of receipt
Concentration:	lot specific
Purification:	Immunogen affinity purified
Conjugation:	Unconjugated
Storage:	Store at -20°C as received.
Stability:	Stable for 12 months from date of receipt.
Predicted Protein Size:	58 kDa
Gene Name:	zinc finger protein 682
Database Link:	NP_149973 Entrez Gene 91120 Human O95780
Background:	ZNF682 May be involved in transcriptional regulation. Belongs to the krueppel C2H2-type zinc-finger protein family. 2 isoforms of the human protein are produced by alternative splicing. Note: This description may include information from UniProtKB.
Synonyms:	BC39498_3
Note:	ZNF682 Antibody detects endogenous levels of ZNF682
Protein Families:	Transcription Factors



[View online »](#)

Product images:



Western blot analysis on COLO205 cell lysate
using ZNF682 Antibody