

Product datasheet for **TA347659**

BCAR3 Rabbit Polyclonal Antibody

Product data:

Product Type:	Primary Antibodies
Applications:	WB
Recommended Dilution:	WB: 1:500-1:2000
Reactivity:	Human
Host:	Rabbit
Isotype:	IgG
Clonality:	Polyclonal
Immunogen:	The immunogen for anti-BCAR3 Antibody: A synthesized peptide derived from human BCAR3
Formulation:	Rabbit IgG in phosphate buffered saline , pH 7.4, 150mM NaCl, 0.02% sodium azide and 50% glycerol. Store at -20?. Stable for 12 months from date of receipt
Concentration:	lot specific
Purification:	Immunogen affinity purified
Conjugation:	Unconjugated
Storage:	Store at -20°C as received.
Stability:	Stable for 12 months from date of receipt.
Predicted Protein Size:	92 kDa
Gene Name:	breast cancer anti-estrogen resistance 3
Database Link:	NP_003558 Entrez Gene 8412 Human Q75815
Background:	a ubiquitously expressed regulator of R-Ras activity that has been implicated in breast cancer. A GDP exchange factor whose overexpression confers antiestrogen resistance, activates Rac, PAK1, and the cyclin D1. Can accelerate the degradation of IRS-1, thus regulating signaling through the insulin receptor. When overexpressed, it confers anti-estrogen resistance in breast cancer cell lines. May also be regulated by cellular adhesion to extracellular matrix proteins. Up-regulated by interleukin-1-alpha and TNF-beta in thymus cortical reticular cell lines (mouse).Two alternatively spliced human isoforms have been described.
Synonyms:	NSP2; SH2D3B

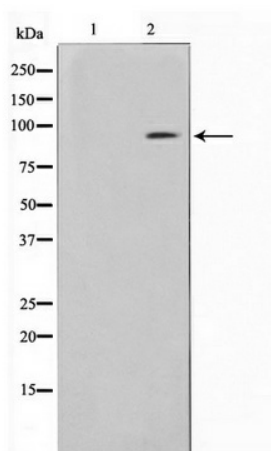


[View online »](#)

Note: BCAR3 Antibody detects endogenous levels of BCAR3

Protein Families: Druggable Genome

Product images:



Western blot analysis on HeLa cell lysate using BCAR3 Antibody