

Product datasheet for **TA347658**

AZI2 Rabbit Polyclonal Antibody

Product data:

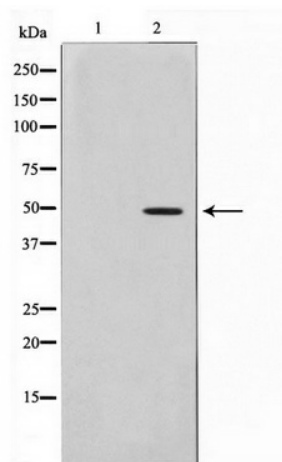
Product Type:	Primary Antibodies
Applications:	WB
Recommended Dilution:	WB: 1:500-1:2000
Reactivity:	Human, Mouse, Rat
Host:	Rabbit
Isotype:	IgG
Clonality:	Polyclonal
Immunogen:	The immunogen for anti-AZI2 Antibody: A synthesized peptide derived from human AZI2
Formulation:	Rabbit IgG in phosphate buffered saline , pH 7.4, 150mM NaCl, 0.02% sodium azide and 50% glycerol. Store at -20?. Stable for 12 months from date of receipt
Concentration:	lot specific
Purification:	Immunogen affinity purified
Conjugation:	Unconjugated
Storage:	Store at -20°C as received.
Stability:	Stable for 12 months from date of receipt.
Predicted Protein Size:	48 kDa
Gene Name:	5-azacytidine induced 2
Database Link:	NP_071906 Entrez Gene 27215 MouseEntrez Gene 316051 RatEntrez Gene 64343 Human Q9H6S1
Background:	AZI2 Activates serine/threonine-protein kinase TBK1 and facilitates its oligomerization. Enhances the phosphorylation of NF-kappa-B p65 subunit RELA by TBK1. Promotes TBK1-induced as well as TNF-alpha or PMA-induced activation of NF-kappa-B. Participates in IFN-beta promoter activation via TICAM1. Interacts with IKBKE, TBK1 and TICAM1. 2 isoforms of the human protein are produced by alternative splicing.
Synonyms:	AZ2; NAP1; TILP
Note:	AZI2 Antibody detects endogenous levels of AZI2



[View online »](#)

Protein Pathways: RIG-I-like receptor signaling pathway

Product images:



Western blot analysis on HepG2 cell lysate using AZI2 Antibody