

## Product datasheet for **TA347656**

### DCP1A Rabbit Polyclonal Antibody

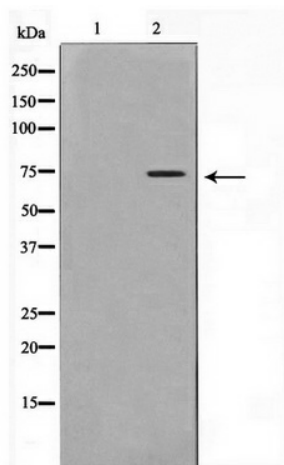
#### Product data:

Product Type:	Primary Antibodies
Applications:	WB
Recommended Dilution:	WB: 1:500-1:2000
Reactivity:	Human, Mouse
Host:	Rabbit
Isotype:	IgG
Clonality:	Polyclonal
Immunogen:	The immunogen for anti-DCP1A Antibody: A synthesized peptide derived from human DCP1A
Formulation:	Rabbit IgG in phosphate buffered saline , pH 7.4, 150mM NaCl, 0.02% sodium azide and 50% glycerol. Store at -20?. Stable for 12 months from date of receipt
Concentration:	lot specific
Purification:	Immunogen affinity purified
Conjugation:	Unconjugated
Storage:	Store at -20°C as received.
Stability:	Stable for 12 months from date of receipt.
Predicted Protein Size:	75 kDa
Gene Name:	decapping mRNA 1A
Database Link:	<a href="#">NP_060873</a> <a href="#">Entrez Gene 75901 Mouse</a> <a href="#">Entrez Gene 55802 Human</a> <a href="#">Q9NPI6</a>
Background:	Detected in heart, brain, placenta, lung, skeletal muscle, liver, kidney and pancreas
Synonyms:	HSA275986; Nbla00360; SMAD4IP1; SMIF
Note:	DCP1A Antibody detects endogenous levels of DCP1A
Protein Families:	Transcription Factors
Protein Pathways:	RNA degradation



[View online »](#)

## Product images:



Western blot analysis on Jurkat cell lysate using DCP1A Antibody