

Product datasheet for **TA347655**

DNA PKcs (PRKDC) Rabbit Polyclonal Antibody

Product data:

Product Type:	Primary Antibodies
Applications:	WB
Recommended Dilution:	WB: 1:500-1:2000
Reactivity:	Human, Mouse
Host:	Rabbit
Isotype:	IgG
Clonality:	Polyclonal
Immunogen:	The immunogen for anti-DNA-PK Antibody: A synthesized peptide derived from human DNA-PK
Formulation:	Rabbit IgG in phosphate buffered saline , pH 7.4, 150mM NaCl, 0.02% sodium azide and 50% glycerol. Store at -20?. Stable for 12 months from date of receipt
Concentration:	lot specific
Purification:	Immunogen affinity purified
Conjugation:	Unconjugated
Storage:	Store at -20°C as received.
Stability:	Stable for 12 months from date of receipt.
Predicted Protein Size:	450 kDa
Gene Name:	protein kinase, DNA-activated, catalytic polypeptide
Database Link:	NP_001075109 Entrez Gene 19090 Mouse Entrez Gene 5591 Human P78527
Background:	The PRKDC gene encodes the catalytic subunit of a nuclear DNA-dependent serine/threonine protein kinase (DNA-PK). The second component is the autoimmune antigen Ku (MIM 152690), which is encoded by the G22P1 gene on chromosome 22q. On its own, the catalytic subunit of DNA-PK is inactive and relies on the G22P1 component to direct it to the DNA and trigger its kinase activity; PRKDC must be bound to DNA to express its catalytic properties.
Synonyms:	DNA-PKcs; DNAPK; DNPk1; HYRC; HYRC1; IMD26; p350; XRCC7



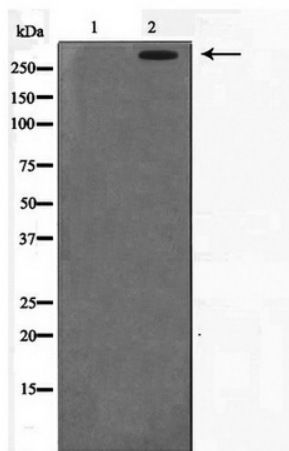
[View online »](#)

Note: DNA-PK Antibody detects endogenous levels of DNA-PK

Protein Families: Druggable Genome, Protein Kinase

Protein Pathways: Cell cycle, Non-homologous end-joining

Product images:



Western blot analysis on HeLa cell lysate using DNA-PK Antibody