

## Product datasheet for **TA347653**

### APC Rabbit Polyclonal Antibody

#### Product data:

Product Type:	Primary Antibodies
Applications:	WB
Recommended Dilution:	WB: 1:500-1:2000
Reactivity:	Human, Mouse, Rat
Host:	Rabbit
Isotype:	IgG
Clonality:	Polyclonal
Immunogen:	The immunogen for anti-APC Antibody: A synthesized peptide derived from human APC
Formulation:	Rabbit IgG in phosphate buffered saline , pH 7.4, 150mM NaCl, 0.02% sodium azide and 50% glycerol. Store at -20?. Stable for 12 months from date of receipt
Concentration:	lot specific
Purification:	Immunogen affinity purified
Conjugation:	Unconjugated
Storage:	Store at -20°C as received.
Stability:	Stable for 12 months from date of receipt.
Predicted Protein Size:	310 kDa
Gene Name:	adenomatous polyposis coli
Database Link:	<a href="#">NP_001120982</a> <a href="#">Entrez Gene 11789 MouseEntrez Gene 24205 RatEntrez Gene 324 Human P25054</a>
Background:	This gene encodes a tumor suppressor protein that includes among its many intracellular functions one of nuclear export. Defects in this gene cause familial adenomatous polyposis (FAP), an autosomal dominant pre-malignant disease that usually progresses to malignancy. Disease-associated mutations tend to be clustered in a small region designated the mutation cluster region (MCR) and result in a truncated protein product.
Synonyms:	BTPS2; DP2; DP2.5; DP3; GS; PPP1R46
Note:	APC Antibody detects endogenous levels of APC

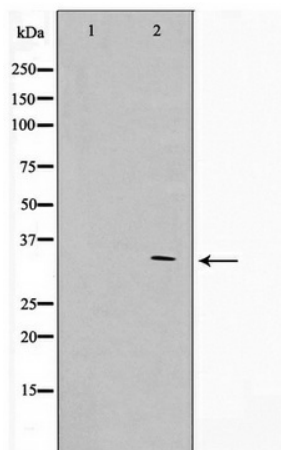


[View online »](#)

Protein Families: Druggable Genome

Protein Pathways: Basal cell carcinoma, Colorectal cancer, Endometrial cancer, Pathways in cancer, Regulation of actin cytoskeleton, Wnt signaling pathway

### Product images:



Western blot analysis on HuvEc cell lysate using APC Antibody