

Product datasheet for **TA347652**

Shugoshin (SGO1) Rabbit Polyclonal Antibody

Product data:

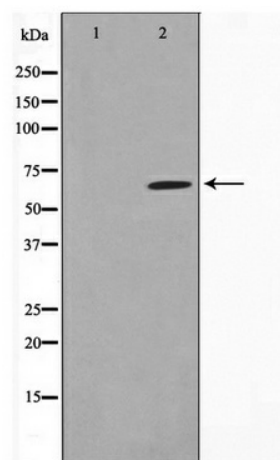
Product Type:	Primary Antibodies
Applications:	WB
Recommended Dilution:	WB: 1:500-1:2000
Reactivity:	Human
Host:	Rabbit
Isotype:	IgG
Clonality:	Polyclonal
Immunogen:	The immunogen for anti-SGOL1 Antibody: A synthesized peptide derived from human SGOL1
Formulation:	Rabbit IgG in phosphate buffered saline , pH 7.4, 150mM NaCl, 0.02% sodium azide and 50% glycerol. Store at -20?. Stable for 12 months from date of receipt
Concentration:	lot specific
Purification:	Immunogen affinity purified
Conjugation:	Unconjugated
Storage:	Store at -20°C as received.
Stability:	Stable for 12 months from date of receipt.
Predicted Protein Size:	64 kDa
Gene Name:	shugoshin 1
Database Link:	NP_612493 Entrez Gene 151648 Human Q5FBB7
Background:	SGO1 Plays a central role in chromosome cohesion during mitosis by preventing premature dissociation of cohesin complex from centromeres after prophase, when most of cohesin complex dissociates from chromosomes arms. May act by preventing phosphorylation of the STAG2 subunit of cohesin complex at the centromere, ensuring cohesin persistence at centromere until cohesin cleavage by ESPL1/separase at anaphase.
Synonyms:	CAID; NY-BR-85; SGO; SGOL1
Note:	SGOL1 Antibody detects endogenous levels of SGOL1



[View online »](#)

Protein Pathways: Oocyte meiosis

Product images:



Western blot analysis on HeLa cell lysate using SGO1 Antibody