

Product datasheet for **TA347651**

ADCK1 Rabbit Polyclonal Antibody

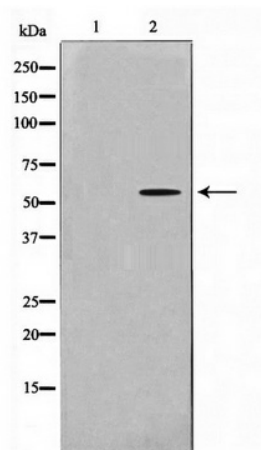
Product data:

Product Type:	Primary Antibodies
Applications:	WB
Recommended Dilution:	WB: 1:500-1:2000
Reactivity:	Human, Mouse
Host:	Rabbit
Isotype:	IgG
Clonality:	Polyclonal
Immunogen:	The immunogen for anti-ADCK1 Antibody: A synthesized peptide derived from human ADCK1
Formulation:	Rabbit IgG in phosphate buffered saline , pH 7.4, 150mM NaCl, 0.02% sodium azide and 50% glycerol. Store at -20?. Stable for 12 months from date of receipt
Concentration:	lot specific
Purification:	Immunogen affinity purified
Conjugation:	Unconjugated
Storage:	Store at -20°C as received.
Stability:	Stable for 12 months from date of receipt.
Predicted Protein Size:	61 kDa
Gene Name:	aarF domain containing kinase 1
Database Link:	NP_001136017 Entrez Gene 72113 Mouse Entrez Gene 57143 Human Q86TW2
Background:	ADCK1 The function of this protein is not yet clear. It is not known if it has protein kinase activity and what type of substrate it would phosphorylate (Ser, Thr or Tyr). Belongs to the protein kinase superfamily. 2 isoforms of the human protein are produced by alternative splicing.
Synonyms:	FLJ39600
Note:	ADCK1 Antibody detects endogenous levels of ADCK1
Protein Families:	Druggable Genome, Protein Kinase, Secreted Protein



[View online »](#)

Product images:



Western blot analysis on A549 cell lysate using ADCK1 Antibody