

Product datasheet for **TA347650**

CDCP1 Rabbit Polyclonal Antibody

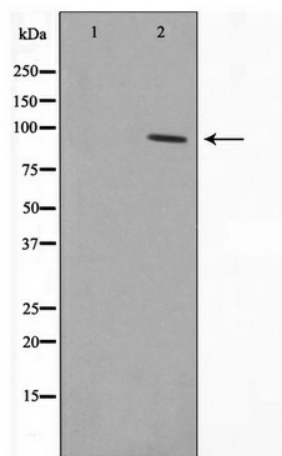
Product data:

Product Type:	Primary Antibodies
Applications:	WB
Recommended Dilution:	WB: 1:500-1:2000
Reactivity:	Human, Mouse
Host:	Rabbit
Isotype:	IgG
Clonality:	Polyclonal
Immunogen:	The immunogen for anti-CDCP1 Antibody: A synthesized peptide derived from human CDCP1
Formulation:	Rabbit IgG in phosphate buffered saline , pH 7.4, 150mM NaCl, 0.02% sodium azide and 50% glycerol. Store at -20?. Stable for 12 months from date of receipt
Concentration:	lot specific
Purification:	Immunogen affinity purified
Conjugation:	Unconjugated
Storage:	Store at -20°C as received.
Stability:	Stable for 12 months from date of receipt.
Predicted Protein Size:	90 kDa
Gene Name:	CUB domain containing protein 1
Database Link:	NP_073753 Entrez Gene 109332 Mouse Entrez Gene 64866 Human Q9H5V8
Background:	CDCP1 a transmembrane protein containing three extracellular CUB domains. Overexpressed in some colon and lung cancers. Its expression level is correlated with the metastatic ability of carcinoma cells. It has been shown to be tyrosine phosphorylated in a cancer cell line. Alternatively spliced transcript variants encoding distinct isoforms have been reported.
Synonyms:	CD318; SIMA135; TRASK
Note:	CDCP1 Antibody detects endogenous levels of CDCP1
Protein Families:	ES Cell Differentiation/IPS, Transmembrane



[View online »](#)

Product images:



Western blot analysis on COLO205 cell lysate using CDCP1 Antibody