

Product datasheet for **TA347646**

ILKAP Rabbit Polyclonal Antibody

Product data:

Product Type:	Primary Antibodies
Applications:	WB
Recommended Dilution:	WB: 1:500-1:2000
Reactivity:	Human, Mouse, Rat
Host:	Rabbit
Isotype:	IgG
Clonality:	Polyclonal
Immunogen:	The immunogen for anti-ILKAP Antibody: A synthesized peptide derived from human ILKAP
Formulation:	Rabbit IgG in phosphate buffered saline , pH 7.4, 150mM NaCl, 0.02% sodium azide and 50% glycerol. Store at -20?. Stable for 12 months from date of receipt
Concentration:	lot specific
Purification:	Immunogen affinity purified
Conjugation:	Unconjugated
Storage:	Store at -20°C as received.
Stability:	Stable for 12 months from date of receipt.
Predicted Protein Size:	45 kDa
Gene Name:	ILK associated serine/threonine phosphatase
Database Link:	NP_110395 Entrez Gene 64538 Rat Entrez Gene 67444 Mouse Entrez Gene 80895 Human Q9H0C8
Background:	ILKAP a protein serine/threonine phosphatase of the PP2C family. Can interact with integrin-linked kinase (ILK/ILK1), a regulator of integrin mediated signaling, and regulate the kinase activity of ILK. Through the interaction with ILK, this protein may selectively affect the signaling process of ILK-mediated glycogen synthase kinase 3 beta (GSK3beta), and thus participate in Wnt signaling pathway. Alternatively spliced transcript variants encoding distinct isoforms have been described.
Synonyms:	ILKAP2; ILKAP3; PP2C-DELTA; PPM1O

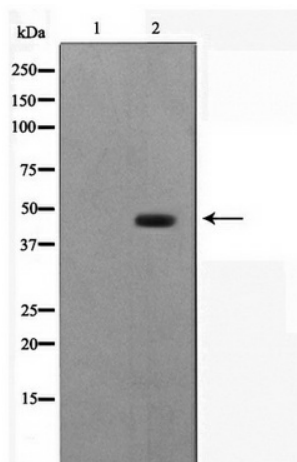


[View online »](#)

Note: ILKAP Antibody detects endogenous levels of ILKAP

Protein Families: Druggable Genome, Phosphatase

Product images:



Western blot analysis on COS7 cell lysate using ILKAP Antibody