

Product datasheet for **TA347645**

FKRP Rabbit Polyclonal Antibody

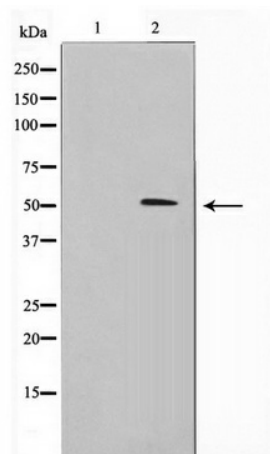
Product data:

Product Type:	Primary Antibodies
Applications:	WB
Recommended Dilution:	WB: 1:500-1:2000
Reactivity:	Human, Mouse, Rat
Host:	Rabbit
Isotype:	IgG
Clonality:	Polyclonal
Immunogen:	The immunogen for anti-FKRP Antibody: A synthesized peptide derived from human FKRP
Formulation:	Rabbit IgG in phosphate buffered saline , pH 7.4, 150mM NaCl, 0.02% sodium azide and 50% glycerol. Store at -20?. Stable for 12 months from date of receipt
Concentration:	lot specific
Purification:	Immunogen affinity purified
Conjugation:	Unconjugated
Storage:	Store at -20°C as received.
Stability:	Stable for 12 months from date of receipt.
Predicted Protein Size:	50 kDa
Gene Name:	fukutin related protein
Database Link:	NP_077277 Entrez Gene 243853 MouseEntrez Gene 308390 RatEntrez Gene 79147 Human Q9H9S5
Background:	FKRP Could be a transferase involved in the modification of glycan moieties of alpha-dystroglycan (DAG1). Belongs to the licD transferase family. May interact with the dystrophin-glycoprotein complex (DGC).
Synonyms:	LGMD2I; MDC1C; MDDGA5; MDDGB5; MDDGC5
Note:	FKRP Antibody detects endogenous levels of FKRP
Protein Families:	Transmembrane



[View online »](#)

Product images:



Western blot analysis on Jurkat cell lysate using FKRP Antibody