

Product datasheet for **TA347644**

alpha Tubulin (TUBA1A) Rabbit Polyclonal Antibody

Product data:

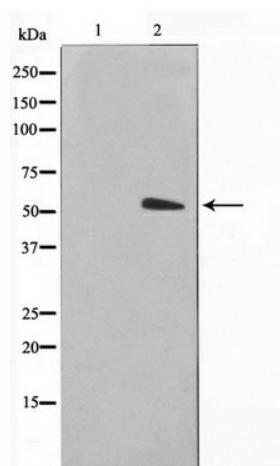
Product Type:	Primary Antibodies
Applications:	WB
Recommended Dilution:	WB: 1:500-1:2000
Reactivity:	Human, Mouse, Rat
Host:	Rabbit
Isotype:	IgG
Clonality:	Polyclonal
Immunogen:	The immunogen for anti-Tubulin alpha Antibody: A synthesized peptide derived from human Tubulin alpha
Formulation:	Rabbit IgG in phosphate buffered saline , pH 7.4, 150mM NaCl, 0.02% sodium azide and 50% glycerol. Store at -20?. Stable for 12 months from date of receipt
Concentration:	lot specific
Purification:	Immunogen affinity purified
Conjugation:	Unconjugated
Storage:	Store at -20°C as received.
Stability:	Stable for 12 months from date of receipt.
Predicted Protein Size:	50 kDa
Gene Name:	tubulin alpha 1a
Database Link:	NP_006000 Entrez Gene 22142 Mouse Entrez Gene 64158 Rat Entrez Gene 7846 Human Q71U36
Background:	TUBA1A Tubulin is the major constituent of microtubules. It binds two moles of GTP, one at an exchangeable site on the beta chain and one at a non-exchangeable site on the alpha-chain.
Synonyms:	B-ALPHA-1; LIS3; TUBA3
Note:	Tubulin alpha Antibody detects endogenous levels of Tubulin alpha
Protein Families:	Druggable Genome



[View online »](#)

Protein Pathways: Gap junction, Pathogenic Escherichia coli infection

Product images:



Western blot analysis on NIH-3T3 cell lysate using Tubulin alpha Antibody