

Product datasheet for **TA347641**

ACTG2 Rabbit Polyclonal Antibody

Product data:

Product Type:	Primary Antibodies
Applications:	WB
Recommended Dilution:	WB: 1:500-1:2000
Reactivity:	Human, Mouse, Rat
Host:	Rabbit
Isotype:	IgG
Clonality:	Polyclonal
Immunogen:	The immunogen for anti-Actin-gamma2 Antibody: A synthesized peptide derived from human Actin-gamma2
Formulation:	Rabbit IgG in phosphate buffered saline , pH 7.4, 150mM NaCl, 0.02% sodium azide and 50% glycerol. Store at -20?. Stable for 12 months from date of receipt
Concentration:	lot specific
Purification:	Immunogen affinity purified
Conjugation:	Unconjugated
Storage:	Store at -20°C as received.
Stability:	Stable for 12 months from date of receipt.
Predicted Protein Size:	45 kDa
Gene Name:	actin, gamma 2, smooth muscle, enteric
Database Link:	NP_001606 Entrez Gene 11468 Mouse Entrez Gene 25365 Rat Entrez Gene 72 Human P63267
Background:	ACTG2 Actins are highly conserved proteins that are involved in various types of cell motility and are ubiquitously expressed in all eukaryotic cells. Polymerization of globular actin (G-actin) leads to a structural filament (F-actin) in the form of a two-stranded helix. Each actin can bind to 4 others. Belongs to the actin family. Note: This description may include information from UniProtKB.
Synonyms:	ACT; ACTA3; ACTE; ACTL3; ACTSG; VSCM

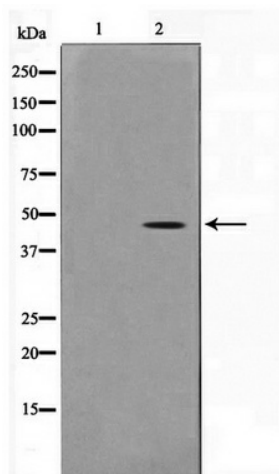


[View online »](#)

Note: Actin-gamma2 Antibody detects endogenous levels of Actin-gamma2

Protein Pathways: Vascular smooth muscle contraction

Product images:



Western blot analysis on COLO205 cell lysate using Actin-gamma2 Antibody