

## Product datasheet for **TA347640**

### ADPGK Rabbit Polyclonal Antibody

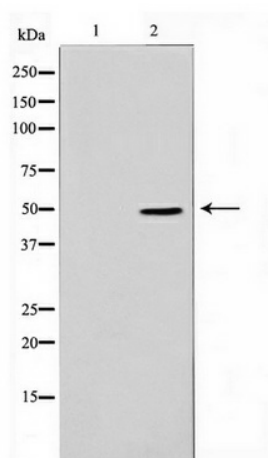
#### Product data:

Product Type:	Primary Antibodies
Applications:	WB
Recommended Dilution:	WB: 1:500-1:2000
Reactivity:	Human, Mouse, Rat
Host:	Rabbit
Isotype:	IgG
Clonality:	Polyclonal
Immunogen:	The immunogen for anti-ADPGK Antibody: A synthesized peptide derived from human ADPGK
Formulation:	Rabbit IgG in phosphate buffered saline , pH 7.4, 150mM NaCl, 0.02% sodium azide and 50% glycerol. Store at -20?. Stable for 12 months from date of receipt
Concentration:	lot specific
Purification:	Immunogen affinity purified
Conjugation:	Unconjugated
Storage:	Store at -20°C as received.
Stability:	Stable for 12 months from date of receipt.
Predicted Protein Size:	47 kDa
Gene Name:	ADP-dependent glucokinase
Database Link:	<a href="#">NP_112574</a> <a href="#">Entrez Gene 72141 Mouse</a> <a href="#">Entrez Gene 315722 Rat</a> <a href="#">Entrez Gene 83440 Human</a> <a href="#">Q9BRR6</a>
Background:	ADPGK Catalyzes the phosphorylation of D-glucose to D-glucose 6-phosphate using ADP as the phosphate donor. GDP and CDP can replace ADP, but with reduced efficiency. Belongs to the ADP-dependent glucokinase family. Monomer. 6 isoforms of the human protein are produced by alternative splicing.
Synonyms:	2610017G09Rik; ADP-GK
Note:	ADPGK Antibody detects endogenous levels of ADPGK



[View online »](#)

## Product images:



Western blot analysis on Jurkat cell lysate using ADPGK Antibody