

Product datasheet for **TA347639**

DIRAS1 Rabbit Polyclonal Antibody

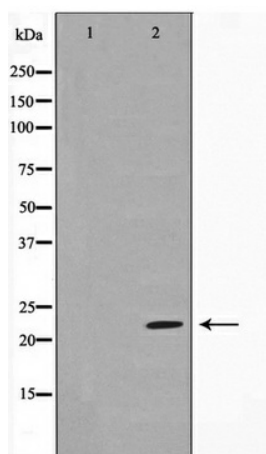
Product data:

Product Type:	Primary Antibodies
Applications:	WB
Recommended Dilution:	WB: 1:500-1:2000
Reactivity:	Human
Host:	Rabbit
Isotype:	IgG
Clonality:	Polyclonal
Immunogen:	The immunogen for anti-DIRAS1 Antibody: A synthesized peptide derived from human DIRAS1
Formulation:	Rabbit IgG in phosphate buffered saline , pH 7.4, 150mM NaCl, 0.02% sodium azide and 50% glycerol. Store at -20?. Stable for 12 months from date of receipt
Concentration:	lot specific
Purification:	Immunogen affinity purified
Conjugation:	Unconjugated
Storage:	Store at -20°C as received.
Stability:	Stable for 12 months from date of receipt.
Predicted Protein Size:	22 kDa
Gene Name:	DIRAS family GTPase 1
Database Link:	NP_660156 Entrez Gene 148252 Human O95057
Background:	DIRAS1 Displays low GTPase activity and exist predominantly in the GTP-bound form. Belongs to the small GTPase superfamily. Di-Ras family. Note: This description may include information from UniProtKB.
Synonyms:	Di-Ras1; GBTS1; RIG
Note:	DIRA1 Antibody detects endogenous levels of DIRA1



[View online »](#)

Product images:



Western blot analysis on HeLa cell lysate using DIRAS1 Antibody