

Product datasheet for **TA347638**

ARMCX3 Rabbit Polyclonal Antibody

Product data:

Product Type:	Primary Antibodies
Applications:	WB
Recommended Dilution:	WB: 1:500-1:2000
Reactivity:	Human, Mouse, Rat
Host:	Rabbit
Isotype:	IgG
Clonality:	Polyclonal
Immunogen:	The immunogen for anti-ARMX3 Antibody: A synthesized peptide derived from human ARMX3
Formulation:	Rabbit IgG in phosphate buffered saline , pH 7.4, 150mM NaCl, 0.02% sodium azide and 50% glycerol. Store at -20?. Stable for 12 months from date of receipt
Concentration:	lot specific
Purification:	Immunogen affinity purified
Conjugation:	Unconjugated
Storage:	Store at -20°C as received.
Stability:	Stable for 12 months from date of receipt.
Predicted Protein Size:	38 kDa
Gene Name:	armadillo repeat containing, X-linked 3
Database Link:	NP_808816 Entrez Gene 71703 Mouse Entrez Gene 367902 Rat Entrez Gene 51566 Human Q9UH62
Background:	This gene encodes a member of the ALEX family of proteins which may play a role in tumor suppression. The encoded protein contains a potential N-terminal transmembrane domain and a single Armadillo (arm) repeat. Other proteins containing the arm repeat are involved in development, maintenance of tissue integrity, and tumorigenesis. This gene is closely localized with other family members on the X chromosome. Three transcript variants encoding the same protein have been identified for this gene.
Synonyms:	ALEX3; dj545K15.2; GASP6

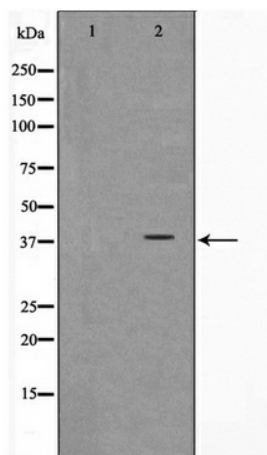


[View online »](#)

Note: ARMX3 Antibody detects endogenous levels of ARMX3

Protein Families: Transmembrane

Product images:



Western blot analysis on K562 cell lysate using ARMX3 Antibody