

Product datasheet for **TA347637**

MAP4K4 Rabbit Polyclonal Antibody

Product data:

Product Type:	Primary Antibodies
Applications:	WB
Recommended Dilution:	WB: 1:500-1:2000
Reactivity:	Human, Mouse
Host:	Rabbit
Isotype:	IgG
Clonality:	Polyclonal
Immunogen:	The immunogen for anti-MEKKK 4 Antibody: A synthesized peptide derived from human MEKKK 4
Formulation:	Rabbit IgG in phosphate buffered saline , pH 7.4, 150mM NaCl, 0.02% sodium azide and 50% glycerol. Store at -20?. Stable for 12 months from date of receipt
Concentration:	lot specific
Purification:	Immunogen affinity purified
Conjugation:	Unconjugated
Storage:	Store at -20°C as received.
Stability:	Stable for 12 months from date of receipt.
Predicted Protein Size:	142 kDa
Gene Name:	mitogen-activated protein kinase kinase kinase kinase 4
Database Link:	NP_663719 Entrez Gene 26921 Mouse Entrez Gene 9448 Human O95819
Background:	a Ser/Thr kinase of the STE20 subfamily. May play a role in the response to environmental stress and cytokines such as TNF-alpha. May interact with the SH3 domain of the adapter proteins Nck. Binds, via its CNH regulatory domain, to the N- terminal region of SPG3A. Upregulated in primary tumors and tumor cell lines. Required for anchorage-independent growth and ras-dependent focus formation in multiple cell lines. 5 isoforms of the human protein are produced by alternative splicing.
Synonyms:	FLH21957; HEL-S-31; HGK; MEKKK4; NIK



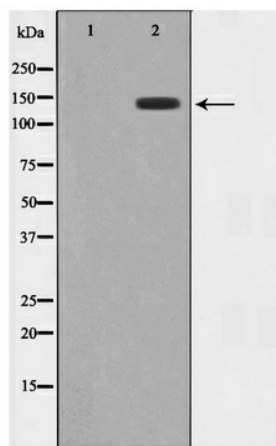
[View online »](#)

Note: MEKKK 4 Antibody detects endogenous levels of MEKKK 4

Protein Families: Druggable Genome, Protein Kinase

Protein Pathways: MAPK signaling pathway

Product images:



Western blot analysis on HuvEc cell lysate using MEKKK 4 Antibody