

Product datasheet for **TA347635**

Collagen IV (COL4A1) Rabbit Polyclonal Antibody

Product data:

Product Type:	Primary Antibodies
Applications:	WB
Recommended Dilution:	WB: 1:500-1:2000
Reactivity:	Human, Mouse
Host:	Rabbit
Isotype:	IgG
Clonality:	Polyclonal
Immunogen:	The immunogen for anti-Collagen IV Antibody: A synthesized peptide derived from human Collagen IV
Formulation:	Rabbit IgG in phosphate buffered saline , pH 7.4, 150mM NaCl, 0.02% sodium azide and 50% glycerol. Store at -20?. Stable for 12 months from date of receipt
Concentration:	lot specific
Purification:	Immunogen affinity purified
Conjugation:	Unconjugated
Storage:	Store at -20°C as received.
Stability:	Stable for 12 months from date of receipt.
Predicted Protein Size:	160 kDa
Gene Name:	collagen type IV alpha 1 chain
Database Link:	NP_001836 Entrez Gene 12826 Mouse Entrez Gene 1282 Human P02462
Background:	COL4A1 Type IV collagen is the major structural component of glomerular basement membranes (GBM), forming a 'chicken-wire' meshwork together with laminins, proteoglycans and entactin/nidogen. Belongs to the type IV collagen family. There are six type IV collagen isoforms, alpha 1(IV)- alpha 6(IV), each of which can form a triple helix structure with 2 other chains to generate type IV collagen network. 2 isoforms of the human protein are produced by alternative splicing. Note: This description may include information from UniProtKB.
Synonyms:	BSVD

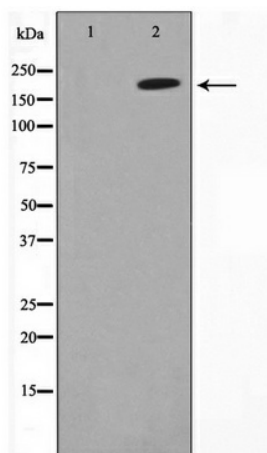


[View online »](#)

Note: Collagen IV Antibody detects endogenous levels of Collagen IV

Protein Pathways: ECM-receptor interaction, Focal adhesion, Pathways in cancer, Small cell lung cancer

Product images:



Western blot analysis on HeLa cell lysate using Collagen IV Antibody