

Product datasheet for **TA347634**

CDK15 Rabbit Polyclonal Antibody

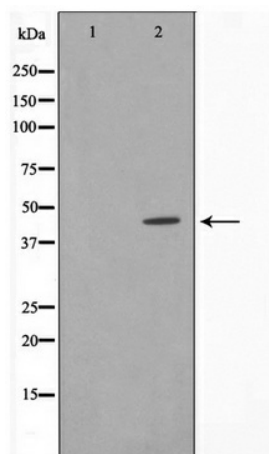
Product data:

Product Type:	Primary Antibodies
Applications:	WB
Recommended Dilution:	WB: 1:500-1:2000
Reactivity:	Human, Mouse
Host:	Rabbit
Isotype:	IgG
Clonality:	Polyclonal
Immunogen:	The immunogen for anti-AL2S7 Antibody: A synthesized peptide derived from human AL2S7
Formulation:	Rabbit IgG in phosphate buffered saline , pH 7.4, 150mM NaCl, 0.02% sodium azide and 50% glycerol. Store at -20?. Stable for 12 months from date of receipt
Concentration:	lot specific
Purification:	Immunogen affinity purified
Conjugation:	Unconjugated
Storage:	Store at -20°C as received.
Stability:	Stable for 12 months from date of receipt.
Predicted Protein Size:	46 kDa
Gene Name:	cyclin-dependent kinase 15
Database Link:	NP_001248364 Entrez Gene 271697 Mouse Entrez Gene 65061 Human Q96Q40
Background:	PFTAIRE2 is a CMGC kinase of the CDK family.
Synonyms:	ALS2CR7; PFTAIRE2; PFTK2
Note:	AL2S7 Antibody detects endogenous levels of AL2S7
Protein Families:	Druggable Genome, Protein Kinase



[View online »](#)

Product images:



Western blot analysis on Jurkat cell lysate using AL2S7 Antibody