

## Product datasheet for TA347633

### YL1 (VPS72) Rabbit Polyclonal Antibody

#### Product data:

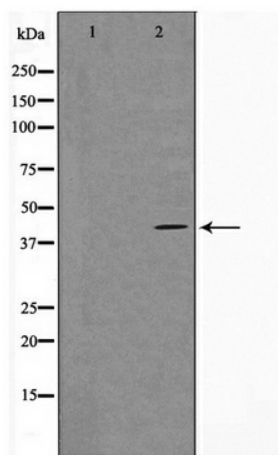
Product Type:	Primary Antibodies
Applications:	WB
Recommended Dilution:	WB: 1:500-1:2000
Reactivity:	Human, Mouse
Host:	Rabbit
Isotype:	IgG
Clonality:	Polyclonal
Immunogen:	The immunogen for anti-VPS72 Antibody: A synthesized peptide derived from human VPS72
Formulation:	Rabbit IgG in phosphate buffered saline , pH 7.4, 150mM NaCl, 0.02% sodium azide and 50% glycerol. Store at -20?. Stable for 12 months from date of receipt
Concentration:	lot specific
Purification:	Immunogen affinity purified
Conjugation:	Unconjugated
Storage:	Store at -20°C as received.
Stability:	Stable for 12 months from date of receipt.
Predicted Protein Size:	41 kDa
Gene Name:	vacuolar protein sorting 72 homolog
Database Link:	<a href="#">NP_005988</a> <a href="#">Entrez Gene 21427 Mouse</a> <a href="#">Entrez Gene 6944 Human</a> <a href="#">Q15906</a>
Background:	VPS72 Could be a DNA-binding transcriptional regulator. May be involved in chromatin modification and remodeling. Belongs to the VPS72/YL1 family. Component of the NuA4 histone acetyltransferase complex which contains the catalytic subunit KAT5/TIP60 and the subunits EP400, TRRAP/PAF400, BRD8/SMAP, EPC1, DMAP1/DNMAP1, RUVBL1/TIP49, RUVBL2, ING3, actin, ACTL6A/BAF53A, MORF4L1/MRG15, MORF4L2/MRGX, MRGBP, YEATS4/GAS41 and VPS72/YL1.
Synonyms:	CFL1; Swc2; TCFL1; YL-1; YL1


[View online »](#)

**Note:** VPS72 Antibody detects endogenous levels of VPS72

**Protein Families:** Transcription Factors

**Product images:**



Western blot analysis on RAW264.7 cell lysate using VPS72 Antibody