

Product datasheet for **TA347631**

SKP2 Rabbit Polyclonal Antibody

Product data:

Product Type:	Primary Antibodies
Applications:	WB
Recommended Dilution:	WB: 1:500-1:2000
Reactivity:	Human
Host:	Rabbit
Isotype:	IgG
Clonality:	Polyclonal
Immunogen:	The immunogen for anti-SKP2/p45 Antibody: A synthesized peptide derived from human SKP2/p45
Formulation:	Rabbit IgG in phosphate buffered saline , pH 7.4, 150mM NaCl, 0.02% sodium azide and 50% glycerol. Store at -20?. Stable for 12 months from date of receipt
Concentration:	lot specific
Purification:	Immunogen affinity purified
Conjugation:	Unconjugated
Storage:	Store at -20°C as received.
Stability:	Stable for 12 months from date of receipt.
Predicted Protein Size:	47 kDa
Gene Name:	S-phase kinase-associated protein 2, E3 ubiquitin protein ligase
Database Link:	NP_005974 Entrez Gene 6502 Human Q13309
Background:	SKP2 an F-box protein of the SCF (SKP1-CUL1-F- box protein) E3 ubiquitin ligase system. The F-box component of the SCF complex is responsible for recognizing different substrates for ubiquitination. The SCF E3 complex mediates the ubiquitination and subsequent proteasomal degradation of target proteins involved in cell cycle progression, signal transduction and transcription. Specifically recognizes phosphorylated CDKN1B/p27kip and is involved in regulation of G1/S transition. Degradation of CDKN1B/p27kip also requires CKS1. Three alternatively-spliced isoforms have been described.



[View online »](#)

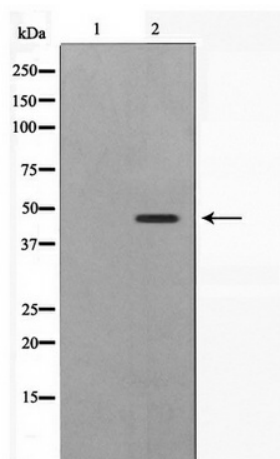
Synonyms: FBL1; FBXL1; FLB1; p45

Note: SKP2/p45 Antibody detects endogenous levels of SKP2/p45

Protein Families: Druggable Genome

Protein Pathways: Acute myeloid leukemia, Apoptosis, Cell cycle, Oocyte meiosis, p53 signaling pathway, Pathways in cancer, Progesterone-mediated oocyte maturation, Small cell lung cancer, Ubiquitin mediated proteolysis

Product images:



Western blot analysis on 293 cell lysate using SKP2/p45 Antibody