

## Product datasheet for **TA347628**

### TUSC2 Rabbit Polyclonal Antibody

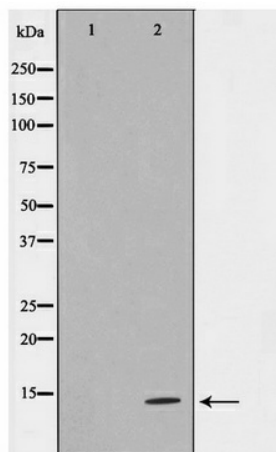
#### Product data:

Product Type:	Primary Antibodies
Applications:	WB
Recommended Dilution:	WB: 1:500-1:2000
Reactivity:	Human, Mouse
Host:	Rabbit
Isotype:	IgG
Clonality:	Polyclonal
Immunogen:	The immunogen for anti-TUSC2 Antibody: A synthesized peptide derived from human TUSC2
Formulation:	Rabbit IgG in phosphate buffered saline , pH 7.4, 150mM NaCl, 0.02% sodium azide and 50% glycerol. Store at -20?. Stable for 12 months from date of receipt
Concentration:	lot specific
Purification:	Immunogen affinity purified
Conjugation:	Unconjugated
Storage:	Store at -20°C as received.
Stability:	Stable for 12 months from date of receipt.
Predicted Protein Size:	12 kDa
Gene Name:	tumor suppressor candidate 2
Database Link:	<a href="#">NP_009206</a> <a href="#">Entrez Gene 80385 Mouse</a> <a href="#">Entrez Gene 11334 Human</a> <a href="#">O75896</a>
Background:	May function as a tumor suppressor, inhibiting colony formation, causing G1 arrest and ultimately inducing apoptosis in homozygous 3p21.3 120-kb region-deficient cells.
Synonyms:	C3orf11; FUS1; PAP; PDAP2
Note:	TUSC2 Antibody detects endogenous levels of TUSC2
Protein Families:	Druggable Genome



[View online »](#)

## Product images:



Western blot analysis on HeLa cell lysate using  
TUSC2 Antibody