

## Product datasheet for **TA347627**

### LASS4 (CERS4) Rabbit Polyclonal Antibody

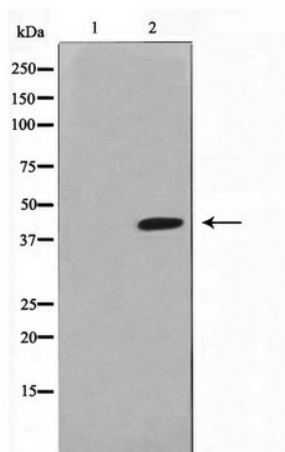
#### Product data:

Product Type:	Primary Antibodies
Applications:	WB
Recommended Dilution:	WB: 1:500-1:2000
Reactivity:	Human
Host:	Rabbit
Isotype:	IgG
Clonality:	Polyclonal
Immunogen:	The immunogen for anti-LASS4 Antibody: A synthesized peptide derived from human LASS4
Formulation:	Rabbit IgG in phosphate buffered saline , pH 7.4, 150mM NaCl, 0.02% sodium azide and 50% glycerol. Store at -20?. Stable for 12 months from date of receipt
Concentration:	lot specific
Purification:	Immunogen affinity purified
Conjugation:	Unconjugated
Storage:	Store at -20°C as received.
Stability:	Stable for 12 months from date of receipt.
Predicted Protein Size:	46 kDa
Gene Name:	ceramide synthase 4
Database Link:	<a href="#">NP_078828</a> <a href="#">Entrez Gene 79603 Human</a> <a href="#">Q9HA82</a>
Background:	Lass4 May be either a bona fide (dihydro)ceramide synthase or a modulator of its activity. When overexpressed in cells is involved in the production of sphingolipids containing different fatty acid donors (N-linked stearyl- (C18) or arachidoyl- (C20) ceramides) in a fumonisins B1-independent manner.
Synonyms:	LASS4; Trh1
Note:	LASS4 Antibody detects endogenous levels of LASS4
Protein Families:	Transcription Factors, Transmembrane



[View online »](#)

## Product images:



Western blot analysis on HuvEc cell lysate using LASS4 Antibody