

Product datasheet for **TA347625**

MAST3 Rabbit Polyclonal Antibody

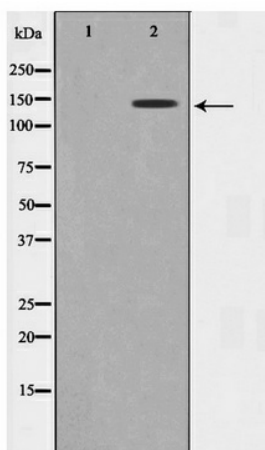
Product data:

Product Type:	Primary Antibodies
Applications:	WB
Recommended Dilution:	WB: 1:500-1:2000
Reactivity:	Human, Mouse
Host:	Rabbit
Isotype:	IgG
Clonality:	Polyclonal
Immunogen:	The immunogen for anti-MAST3 Antibody: A synthesized peptide derived from human MAST3
Formulation:	Rabbit IgG in phosphate buffered saline , pH 7.4, 150mM NaCl, 0.02% sodium azide and 50% glycerol. Store at -20?. Stable for 12 months from date of receipt
Concentration:	lot specific
Purification:	Immunogen affinity purified
Conjugation:	Unconjugated
Storage:	Store at -20°C as received.
Stability:	Stable for 12 months from date of receipt.
Predicted Protein Size:	143 kDa
Gene Name:	microtubule associated serine/threonine kinase 3
Database Link:	NP_055831 Entrez Gene 546071 Mouse Entrez Gene 23031 Human O60307
Background:	MAST3 Belongs to the protein kinase superfamily. AGC Ser/Thr protein kinase family. Interacts with PTEN. Note: This description may include information from UniProtKB.
Synonyms:	KIAA0561
Note:	MAST3 Antibody detects endogenous levels of MAST3
Protein Families:	Druggable Genome, Protein Kinase



[View online »](#)

Product images:



Western blot analysis on Jurkat cell lysate using MAST3 Antibody