

Product datasheet for **TA347624**

AIP1 (MAGI2) Rabbit Polyclonal Antibody

Product data:

Product Type:	Primary Antibodies
Applications:	WB
Recommended Dilution:	WB: 1:500-1:2000
Reactivity:	Human, Mouse, Rat
Host:	Rabbit
Isotype:	IgG
Clonality:	Polyclonal
Immunogen:	The immunogen for anti-MAGI2 Antibody: A synthesized peptide derived from human MAGI2
Formulation:	Rabbit IgG in phosphate buffered saline , pH 7.4, 150mM NaCl, 0.02% sodium azide and 50% glycerol. Store at -20?. Stable for 12 months from date of receipt
Concentration:	lot specific
Purification:	Immunogen affinity purified
Conjugation:	Unconjugated
Storage:	Store at -20°C as received.
Stability:	Stable for 12 months from date of receipt.
Predicted Protein Size:	159 kDa
Gene Name:	membrane associated guanylate kinase, WW and PDZ domain containing 2
Database Link:	NP_036433 Entrez Gene 50791 MouseEntrez Gene 113970 RatEntrez Gene 9863 Human Q86UL8
Background:	The protein encoded by this gene interacts with atrophin-1. Atrophin-1 contains a polyglutamine repeat, expansion of which is responsible for dentatorubral and pallidolusyan atrophy. This encoded protein is characterized by two WW domains, a guanylate kinase-like domain, and multiple PDZ domains. It has structural similarity to the membrane-associated guanylate kinase homologue (MAGUK) family.
Synonyms:	ACVRIP1; AIP-1; AIP1; ARIP1; MAGI-2; SSCAM
Note:	MAGI2 Antibody detects endogenous levels of MAGI2

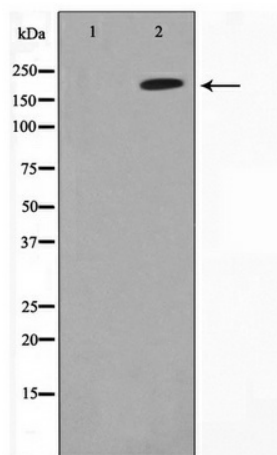


[View online »](#)

Protein Families: Druggable Genome

Protein Pathways: Tight junction

Product images:



Western blot analysis on A549 cell lysate using
MAGI2 Antibody