

Product datasheet for TA347622

XRN2 Rabbit Polyclonal Antibody

Product data:

Product Type:	Primary Antibodies
Applications:	WB
Recommended Dilution:	WB: 1:500-1:2000
Reactivity:	Human, Mouse
Host:	Rabbit
Isotype:	IgG
Clonality:	Polyclonal
Immunogen:	The immunogen for anti-XRN2 Antibody: A synthesized peptide derived from human XRN2
Formulation:	Rabbit IgG in phosphate buffered saline , pH 7.4, 150mM NaCl, 0.02% sodium azide and 50% glycerol. Store at -20?. Stable for 12 months from date of receipt
Concentration:	lot specific
Purification:	Immunogen affinity purified
Conjugation:	Unconjugated
Storage:	Store at -20°C as received.
Stability:	Stable for 12 months from date of receipt.
Predicted Protein Size:	108 kDa
Gene Name:	5'-3' exoribonuclease 2
Database Link:	NP_036387 Entrez Gene 24128 Mouse Entrez Gene 22803 Human Q9H0D6
Background:	This gene shares similarity with the mouse Dhml and the yeast dhp1 gene. The yeast gene is involved in homologous recombination and RNA metabolism, such as RNA synthesis and RNA trafficking. Complementation studies show that Dhml has a similar function in mouse as dhp1. The function of the human gene has not yet been determined. Transcript variants encoding different isoforms have been noted for this gene; however, their full-length nature is not known.
Synonyms:	5'-3' exoribonuclease 2; Dhml-like protein (mouse homolog); OTTHUMP00000030403

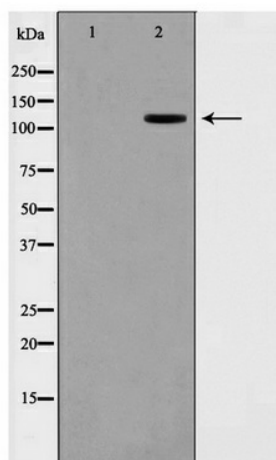


[View online »](#)

Note: XRN2 Antibody detects endogenous levels of XRN2

Protein Pathways: RNA degradation

Product images:



Western blot analysis on COS7 cell lysate using XRN2 Antibody