

Product datasheet for **TA347620**

LRAT Rabbit Polyclonal Antibody

Product data:

Product Type:	Primary Antibodies
Applications:	WB
Recommended Dilution:	WB: 1:500-1:2000
Reactivity:	Human, Mouse, Rat
Host:	Rabbit
Isotype:	IgG
Clonality:	Polyclonal
Immunogen:	The immunogen for anti-LRAT Antibody: A synthesized peptide derived from human LRAT
Formulation:	Rabbit IgG in phosphate buffered saline , pH 7.4, 150mM NaCl, 0.02% sodium azide and 50% glycerol. Store at -20?. Stable for 12 months from date of receipt
Concentration:	lot specific
Purification:	Immunogen affinity purified
Conjugation:	Unconjugated
Storage:	Store at -20°C as received.
Stability:	Stable for 12 months from date of receipt.
Predicted Protein Size:	27 kDa
Gene Name:	lecithin retinol acyltransferase (phosphatidylcholine--retinol O-acyltransferase)
Database Link:	NP_004735 Entrez Gene 64047 Rat Entrez Gene 79235 Mouse Entrez Gene 9227 Human O95237

Background: LRAT Transfers the acyl group from the sn-1 position of phosphatidylcholine to all-trans retinol, producing all-trans retinyl esters. Retinyl esters are storage forms of vitamin A. LRAT plays a critical role in vision. It provides the all-trans retinyl ester substrates for the isomerohydrolase which processes the esters into 11-cis-retinol in the retinal pigment epithelium; due to a membrane-associated alcohol dehydrogenase, 11 cis-retinol is oxidized and converted into 11-cis-retinaldehyde which is the chromophore for rhodopsin and the cone photopigments. Belongs to the H-rev107 family. LRAT activity is up-regulated by dietary vitamin A.



[View online »](#)

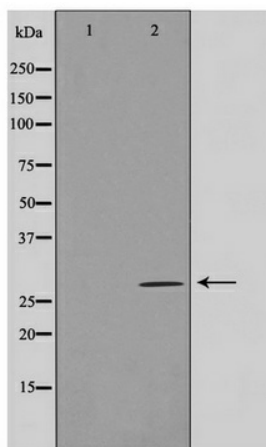
Synonyms: LCA14

Note: LRAT Antibody detects endogenous levels of LRAT

Protein Families: Druggable Genome, Transmembrane

Protein Pathways: Retinol metabolism

Product images:



Western blot analysis on COLO205 cell lysate using LRAT Antibody