

## Product datasheet for **TA347619**

### **MAG1 (GPAT3) Rabbit Polyclonal Antibody**

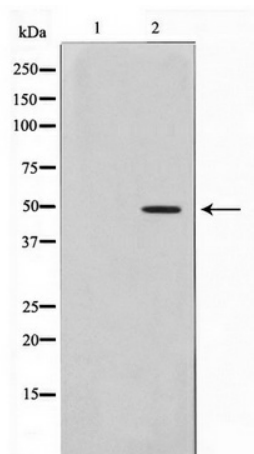
#### **Product data:**

<b>Product Type:</b>	Primary Antibodies
<b>Applications:</b>	WB
<b>Recommended Dilution:</b>	WB: 1:500-1:2000
<b>Reactivity:</b>	Human, Mouse, Rat
<b>Host:</b>	Rabbit
<b>Isotype:</b>	IgG
<b>Clonality:</b>	Polyclonal
<b>Immunogen:</b>	The immunogen for anti-PLCH Antibody: A synthesized peptide derived from human PLCH
<b>Formulation:</b>	Rabbit IgG in phosphate buffered saline , pH 7.4, 150mM NaCl, 0.02% sodium azide and 50% glycerol. Store at -20?. Stable for 12 months from date of receipt
<b>Concentration:</b>	lot specific
<b>Purification:</b>	Immunogen affinity purified
<b>Conjugation:</b>	Unconjugated
<b>Storage:</b>	Store at -20°C as received.
<b>Stability:</b>	Stable for 12 months from date of receipt.
<b>Predicted Protein Size:</b>	48 kDa
<b>Gene Name:</b>	glycerol-3-phosphate acyltransferase 3
<b>Database Link:</b>	<a href="#">NP_116106</a> <a href="#">Entrez Gene 231510 MouseEntrez Gene 305166 RatEntrez Gene 84803 Human Q53EU6</a>
<b>Background:</b>	AGPAT9 Esterifies acyl-group from acyl-ACP to the sn-1 position of glycerol-3-phosphate, an essential step in glycerolipid biosynthesis. Overexpression activates the mTOR pathway. Belongs to the 1-acyl-sn-glycerol-3-phosphate acyltransferase family. Note: This description may include information from UniProtKB.
<b>Synonyms:</b>	AGPAT8; AGPAT9; AGPAT 10; AGPAT10; HMFN0839; LPAAT-theta; MAG1
<b>Note:</b>	PLCH Antibody detects endogenous levels of PLCH
<b>Protein Families:</b>	Transmembrane



[View online »](#)

## Product images:



Western blot analysis on Jurkat cell lysate using PLCH Antibody