

Product datasheet for **TA347618**

E74 like factor 1 (ELF1) Rabbit Polyclonal Antibody

Product data:

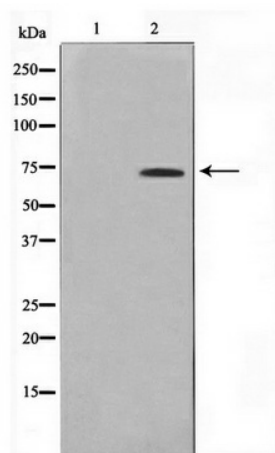
Product Type:	Primary Antibodies
Applications:	WB
Recommended Dilution:	WB: 1:500-1:2000
Reactivity:	Human
Host:	Rabbit
Isotype:	IgG
Clonality:	Polyclonal
Immunogen:	The immunogen for anti-ELF1 Antibody: A synthesized peptide derived from human ELF1
Formulation:	Rabbit IgG in phosphate buffered saline , pH 7.4, 150mM NaCl, 0.02% sodium azide and 50% glycerol. Store at -20?. Stable for 12 months from date of receipt
Concentration:	lot specific
Purification:	Immunogen affinity purified
Conjugation:	Unconjugated
Storage:	Store at -20°C as received.
Stability:	Stable for 12 months from date of receipt.
Predicted Protein Size:	67 kDa
Gene Name:	E74 like ETS transcription factor 1
Database Link:	NP_001138825 Entrez Gene 1997 Human P32519
Background:	Elf-1 Transcription factor that activates the LYN and BLK promoters. Appears to be required for the T-cell-receptor-mediated trans activation of HIV-2 gene expression. Binds specifically to two purine-rich motifs in the HIV-2 enhancer. Belongs to the ETS family. Binds to the underphosphorylated form of RB. May interact with other transcription factors in order to regulate specific genes.
Synonyms:	E74-like factor 1 (ets domain transcription factor); OTTHUMP00000018310
Note:	ELF1 Antibody detects endogenous levels of ELF1



[View online »](#)

Protein Families: Transcription Factors

Product images:



Western blot analysis on 293 cell lysate using
ELF1 Antibody