

## Product datasheet for **TA347615**

### EGR2 Rabbit Polyclonal Antibody

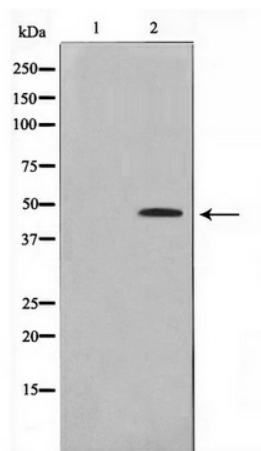
#### Product data:

|                         |  |
|-------------------------|--|
| Product Type:           | Primary Antibodies   |
| Applications:           | WB   |
| Recommended Dilution:   | WB: 1:500-1:2000   |
| Reactivity:             | Human, Mouse, Rat  |
| Host:                   | Rabbit   |
| Isotype:                | IgG  |
| Clonality:              | Polyclonal   |
| Immunogen:              | The immunogen for anti-EGR2 Antibody: A synthesized peptide derived from human EGR2  |
| Formulation:            | Rabbit IgG in phosphate buffered saline , pH 7.4, 150mM NaCl, 0.02% sodium azide and 50% glycerol. Store at -20?. Stable for 12 months from date of receipt  |
| Concentration:          | lot specific   |
| Purification:           | Immunogen affinity purified  |
| Conjugation:            | Unconjugated   |
| Storage:                | Store at -20°C as received.  |
| Stability:              | Stable for 12 months from date of receipt.   |
| Predicted Protein Size: | 50 kDa   |
| Gene Name:              | early growth response 2  |
| Database Link:          | <a href="#">NP_000390</a><br><a href="#">Entrez Gene 13654 MouseEntrez Gene 114090 RatEntrez Gene 1959 Human P11161</a>  |
| Background:             | The early growth response protein 2 is a transcription factor with three tandem C2H2-type zinc fingers. Mutations in this gene are associated with the autosomal dominant Charcot-Marie-Tooth disease, type 1. |
| Synonyms:               | AT591; CMT1D; CMT4E; KROX20  |
| Note:                   | EGR2 Antibody detects endogenous levels of EGR2  |
| Protein Families:       | Druggable Genome, Transcription Factors  |



[View online »](#)

## Product images:



Western blot analysis on HeLa cell lysate using EGR2 Antibody