

## Product datasheet for **TA347614**

### CYP26A1 Rabbit Polyclonal Antibody

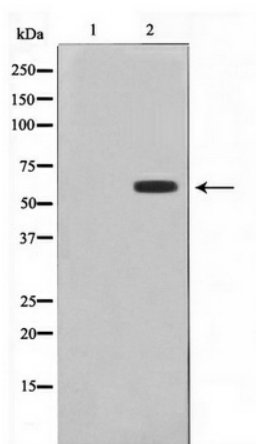
#### Product data:

Product Type:	Primary Antibodies
Applications:	WB
Recommended Dilution:	WB: 1:500-1:2000
Reactivity:	Human, Mouse, Rat
Host:	Rabbit
Isotype:	IgG
Clonality:	Polyclonal
Immunogen:	The immunogen for anti-Cytochrome P450 26A1 Antibody: A synthesized peptide derived from human Cytochrome P450 26A1
Formulation:	Rabbit IgG in phosphate buffered saline , pH 7.4, 150mM NaCl, 0.02% sodium azide and 50% glycerol. Store at -20?. Stable for 12 months from date of receipt
Concentration:	lot specific
Purification:	Immunogen affinity purified
Conjugation:	Unconjugated
Storage:	Store at -20°C as received.
Stability:	Stable for 12 months from date of receipt.
Predicted Protein Size:	56 kDa
Gene Name:	cytochrome P450 family 26 subfamily A member 1
Database Link:	<a href="#">NP_000774</a> <a href="#">Entrez Gene 13082 Mouse</a> <a href="#">Entrez Gene 154985 Rat</a> <a href="#">Entrez Gene 1592 Human</a> <a href="#">O43174</a>



[View online »](#)

- Background:** This gene encodes a member of the cytochrome P450 superfamily of enzymes. The cytochrome P450 proteins are monooxygenases which catalyze many reactions involved in drug metabolism and synthesis of cholesterol, steroids and other lipids. This endoplasmic reticulum protein acts on retinoids, including all-trans-retinoic acid (RA), with both 4-hydroxylation and 18-hydroxylation activities. This enzyme regulates the cellular level of retinoic acid which is involved in regulation of gene expression in both embryonic and adult tissues. Two alternatively spliced transcript variants of this gene, which encode the distinct isoforms, have been reported.
- Synonyms:** CP26; CYP26; P450RAI; P450RAI1
- Note:** Cytochrome P450 26A1 Antibody detects endogenous levels of Cytochrome P450 26A1
- Protein Families:** Druggable Genome, P450, Transmembrane
- Protein Pathways:** Retinol metabolism

**Product images:**

Western blot analysis on HepG2 cell lysate using Cytochrome P450 26A1 Antibody