

Product datasheet for **TA347613**

MN1 Rabbit Polyclonal Antibody

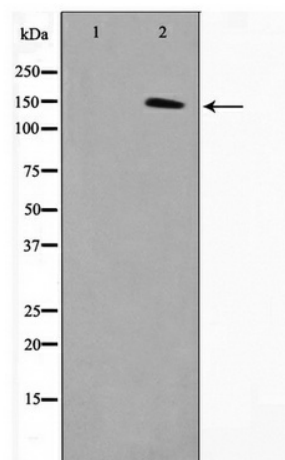
Product data:

Product Type:	Primary Antibodies
Applications:	WB
Recommended Dilution:	WB: 1:500-1:2000
Reactivity:	Human
Host:	Rabbit
Isotype:	IgG
Clonality:	Polyclonal
Immunogen:	The immunogen for anti-MN1 Antibody: A synthesized peptide derived from human MN1
Formulation:	Rabbit IgG in phosphate buffered saline , pH 7.4, 150mM NaCl, 0.02% sodium azide and 50% glycerol. Store at -20?. Stable for 12 months from date of receipt
Concentration:	lot specific
Purification:	Immunogen affinity purified
Conjugation:	Unconjugated
Storage:	Store at -20°C as received.
Stability:	Stable for 12 months from date of receipt.
Predicted Protein Size:	135 kDa
Gene Name:	meningioma (disrupted in balanced translocation) 1
Database Link:	NP_002421 Entrez Gene 4330 Human Q10571
Background:	Meningioma 1 (MN1) contains two sets of CAG repeats. It is disrupted by a balanced translocation (4;22) in a meningioma, and its inactivation may contribute to meningioma 32 pathogenesis.
Synonyms:	dj353E16.2; MGCR; MGCR1; MGCR1-PEN
Note:	MN1 Antibody detects endogenous levels of MN1



[View online »](#)

Product images:



Western blot analysis on COLO205 cell lysate using MN1 Antibody