

Product datasheet for TA347612

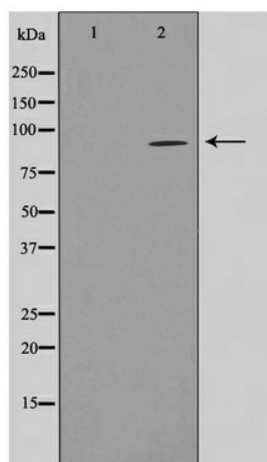
Kanadaptin (SLC4A1AP) Rabbit Polyclonal Antibody

Product data:

Product Type:	Primary Antibodies
Applications:	WB
Recommended Dilution:	WB: 1:500-1:2000
Reactivity:	Human, Mouse
Host:	Rabbit
Isotype:	IgG
Clonality:	Polyclonal
Immunogen:	The immunogen for anti-NADAP Antibody: A synthesized peptide derived from human NADAP
Formulation:	Rabbit IgG in phosphate buffered saline , pH 7.4, 150mM NaCl, 0.02% sodium azide and 50% glycerol. Store at -20?. Stable for 12 months from date of receipt
Concentration:	lot specific
Purification:	Immunogen affinity purified
Conjugation:	Unconjugated
Storage:	Store at -20°C as received.
Stability:	Stable for 12 months from date of receipt.
Predicted Protein Size:	85 kDa
Gene Name:	solute carrier family 4 member 1 adaptor protein
Database Link:	NP_060628 Entrez Gene 20534 Mouse Entrez Gene 22950 Human Q9BWU0
Background:	kanadaptin Protein type: Adaptor/scaffold Cellular Component: cytoplasm; nucleus
Synonyms:	HLC3
Note:	NADAP Antibody detects endogenous levels of NADAP


[View online »](#)

Product images:



Western blot analysis on HuvEc cell lysate using NADAP Antibody