

## Product datasheet for **TA347611**

### MUC13 Rabbit Polyclonal Antibody

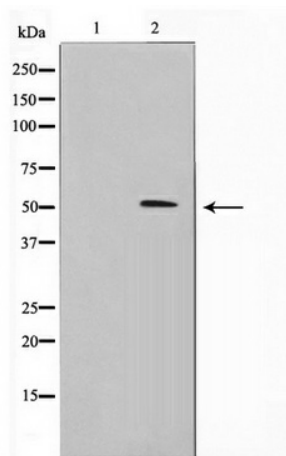
#### Product data:

Product Type:	Primary Antibodies
Applications:	WB
Recommended Dilution:	WB: 1:500-1:2000
Reactivity:	Human
Host:	Rabbit
Isotype:	IgG
Clonality:	Polyclonal
Immunogen:	The immunogen for anti-MUC13 Antibody: A synthesized peptide derived from human MUC13
Formulation:	Rabbit IgG in phosphate buffered saline , pH 7.4, 150mM NaCl, 0.02% sodium azide and 50% glycerol. Store at -20?. Stable for 12 months from date of receipt
Concentration:	lot specific
Purification:	Immunogen affinity purified
Conjugation:	Unconjugated
Storage:	Store at -20°C as received.
Stability:	Stable for 12 months from date of receipt.
Predicted Protein Size:	50 kDa
Gene Name:	mucin 13, cell surface associated
Database Link:	<a href="#">NP_149038</a> <a href="#">Entrez Gene 56667 Human</a> <a href="#">Q9H3R2</a>
Background:	MUC13 Epithelial and hemopoietic transmembrane mucin that may play a role in cell signaling. Homodimer of beta subunits.
Synonyms:	DRCC1; MUC-13
Note:	MUC13 Antibody detects endogenous levels of MUC13
Protein Families:	Transmembrane



[View online »](#)

## Product images:



Western blot analysis on 293 cell lysate using MUC13 Antibody