

Product datasheet for **TA347610**

ZNF498 (ZSCAN25) Rabbit Polyclonal Antibody

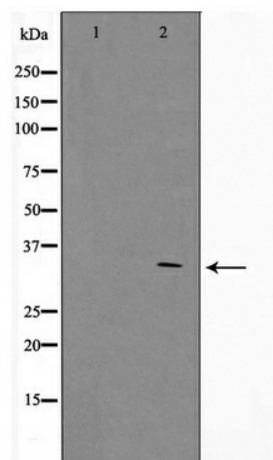
Product data:

Product Type:	Primary Antibodies
Applications:	WB
Recommended Dilution:	WB: 1:500-1:2000
Reactivity:	Human
Host:	Rabbit
Isotype:	IgG
Clonality:	Polyclonal
Immunogen:	The immunogen for anti-ZNF498 Antibody: A synthesized peptide derived from human ZNF498
Formulation:	Rabbit IgG in phosphate buffered saline , pH 7.4, 150mM NaCl, 0.02% sodium azide and 50% glycerol. Store at -20?. Stable for 12 months from date of receipt
Concentration:	lot specific
Purification:	Immunogen affinity purified
Conjugation:	Unconjugated
Storage:	Store at -20°C as received.
Stability:	Stable for 12 months from date of receipt.
Predicted Protein Size:	30 kDa
Gene Name:	zinc finger and SCAN domain containing 25
Database Link:	NP_660090 Entrez Gene 221785 Human Q6NSZ9
Background:	ZNF498 May be involved in transcriptional regulation. Belongs to the krueppel C2H2-type zinc-finger protein family. 4 isoforms of the human protein are produced by alternative splicing.
Synonyms:	ZNF498
Note:	ZNF498 Antibody detects endogenous levels of ZNF498
Protein Families:	Transcription Factors



[View online »](#)

Product images:



Western blot analysis on COS7 cell lysate using ZNF498 Antibody