

Product datasheet for **TA347609**

EPS8L2 Rabbit Polyclonal Antibody

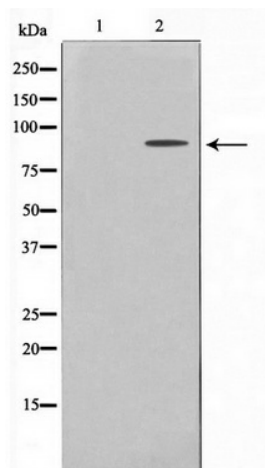
Product data:

Product Type:	Primary Antibodies
Applications:	WB
Recommended Dilution:	WB: 1:500-1:2000
Reactivity:	Human, Mouse
Host:	Rabbit
Isotype:	IgG
Clonality:	Polyclonal
Immunogen:	The immunogen for anti-ES8L2 Antibody: A synthesized peptide derived from human ES8L2
Formulation:	Rabbit IgG in phosphate buffered saline , pH 7.4, 150mM NaCl, 0.02% sodium azide and 50% glycerol. Store at -20?. Stable for 12 months from date of receipt
Concentration:	lot specific
Purification:	Immunogen affinity purified
Conjugation:	Unconjugated
Storage:	Store at -20°C as received.
Stability:	Stable for 12 months from date of receipt.
Predicted Protein Size:	81 kDa
Gene Name:	EPS8 like 2
Database Link:	NP_073609 Entrez Gene 98845 Mouse Entrez Gene 64787 Human Q9H6S3
Background:	EPS8L2 Stimulates guanine exchange activity of SOS1. May play a role in membrane ruffling and remodeling of the actin cytoskeleton. Belongs to the EPS8 family. Interacts with ABI1. Part of a complex that contains SOS1, ABI1 and EPS8L2. Associates with F-actin. 2 isoforms of the human protein are produced by alternative splicing.
Synonyms:	EPS8R2
Note:	ES8L2 Antibody detects endogenous levels of ES8L2
Protein Families:	Druggable Genome



[View online »](#)

Product images:



Western blot analysis on HeLa cell lysate using
ES8L2 Antibody