

Product datasheet for **TA347608**

YTHDF1 Rabbit Polyclonal Antibody

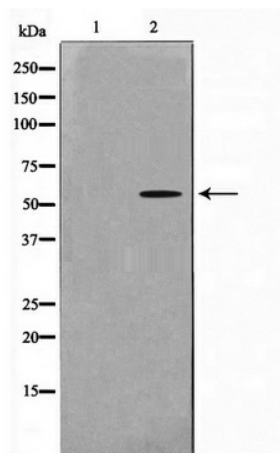
Product data:

Product Type:	Primary Antibodies
Applications:	WB
Recommended Dilution:	WB: 1:500-1:2000
Reactivity:	Human, Mouse, Rat
Host:	Rabbit
Isotype:	IgG
Clonality:	Polyclonal
Immunogen:	The immunogen for anti-YTHDF1 Antibody: A synthesized peptide derived from human YTHDF1
Formulation:	Rabbit IgG in phosphate buffered saline , pH 7.4, 150mM NaCl, 0.02% sodium azide and 50% glycerol. Store at -20?. Stable for 12 months from date of receipt
Concentration:	lot specific
Purification:	Immunogen affinity purified
Conjugation:	Unconjugated
Storage:	Store at -20°C as received.
Stability:	Stable for 12 months from date of receipt.
Predicted Protein Size:	61 kDa
Gene Name:	YTH N6-methyladenosine RNA binding protein 1
Database Link:	NP_060268 Entrez Gene 228994 Mouse Entrez Gene 296467 Rat Entrez Gene 54915 Human Q9BYJ9
Background:	YTHDF1 2 isoforms of the human protein are produced by alternative splicing.
Synonyms:	C20orf21
Note:	YTHDF1 Antibody detects endogenous levels of YTHDF1



[View online »](#)

Product images:



Western blot analysis on 293 cell lysate using YTHDF1 Antibody