

Product datasheet for **TA347607**

TACC1 Rabbit Polyclonal Antibody

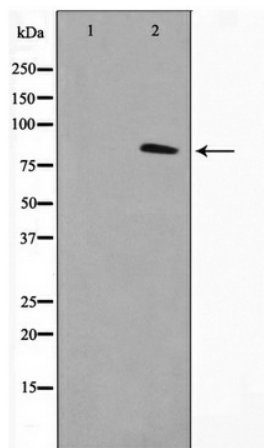
Product data:

Product Type:	Primary Antibodies
Applications:	WB
Recommended Dilution:	WB: 1:500-1:2000
Reactivity:	Human, Mouse
Host:	Rabbit
Isotype:	IgG
Clonality:	Polyclonal
Immunogen:	The immunogen for anti-TACC1 Antibody: A synthesized peptide derived from human TACC1
Formulation:	Rabbit IgG in phosphate buffered saline , pH 7.4, 150mM NaCl, 0.02% sodium azide and 50% glycerol. Store at -20?. Stable for 12 months from date of receipt
Concentration:	lot specific
Purification:	Immunogen affinity purified
Conjugation:	Unconjugated
Storage:	Store at -20°C as received.
Stability:	Stable for 12 months from date of receipt.
Predicted Protein Size:	87 kDa
Gene Name:	transforming acidic coiled-coil containing protein 1
Database Link:	NP_001116296 Entrez Gene 320165 Mouse Entrez Gene 6867 Human O75410
Background:	Likely involved in the processes that promote cell division prior to the formation of differentiated tissues. Interacts with KIAA0097/CH-TOG and with the oncogenic transcription factor YEATS4. Interacts with the Aurora kinases A and B (STK6 and AURKB). Interacts with LSM7, TDRD7 and SNRPG. Interacts with GCN5L2 and PCAF. 8 isoforms of the human protein are produced by alternative splicing. Protein Type: Unknown function
Synonyms:	Ga55
Note:	TACC1 Antibody detects endogenous levels of TACC1



[View online »](#)

Product images:



Western blot analysis on K562 cell lysate using TACC1 Antibody