

Product datasheet for **TA347606**

RTL6 Rabbit Polyclonal Antibody

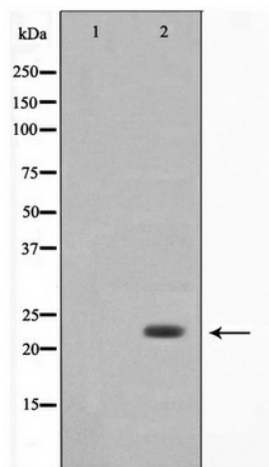
Product data:

Product Type:	Primary Antibodies
Applications:	WB
Recommended Dilution:	WB: 1:500-1:2000
Reactivity:	Human, Mouse
Host:	Rabbit
Isotype:	IgG
Clonality:	Polyclonal
Immunogen:	The immunogen for anti-LDOC1L Antibody: A synthesized peptide derived from human LDOC1L
Formulation:	Rabbit IgG in phosphate buffered saline , pH 7.4, 150mM NaCl, 0.02% sodium azide and 50% glycerol. Store at -20?. Stable for 12 months from date of receipt
Concentration:	lot specific
Purification:	Immunogen affinity purified
Conjugation:	Unconjugated
Storage:	Store at -20°C as received.
Stability:	Stable for 12 months from date of receipt.
Predicted Protein Size:	24 kDa
Gene Name:	leucine zipper, down-regulated in cancer 1-like
Database Link:	NP_115663 Entrez Gene 223732 Mouse Entrez Gene 84247 Human Q6ICC9
Background:	Evidence at transcript level
Synonyms:	dj1033E15.2; Mar6; Mart6
Note:	LDOC1L Antibody detects endogenous levels of LDOC1L



[View online »](#)

Product images:



Western blot analysis on COLO205 cell lysate using LDOC1L Antibody