

## Product datasheet for **TA347605**

### ATF6 beta (ATF6B) Rabbit Polyclonal Antibody

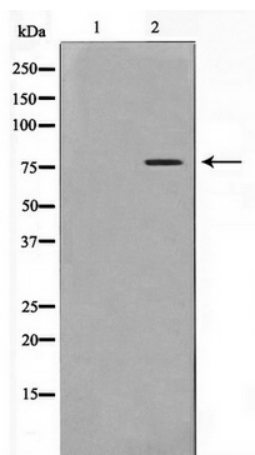
#### Product data:

Product Type:	Primary Antibodies
Applications:	WB
Recommended Dilution:	WB: 1:500-1:2000
Reactivity:	Human
Host:	Rabbit
Isotype:	IgG
Clonality:	Polyclonal
Immunogen:	The immunogen for anti-ATF6B Antibody: A synthesized peptide derived from human ATF6B
Formulation:	Rabbit IgG in phosphate buffered saline , pH 7.4, 150mM NaCl, 0.02% sodium azide and 50% glycerol. Store at -20?. Stable for 12 months from date of receipt
Concentration:	lot specific
Purification:	Immunogen affinity purified
Conjugation:	Unconjugated
Storage:	Store at -20°C as received.
Stability:	Stable for 12 months from date of receipt.
Predicted Protein Size:	76 kDa
Gene Name:	activating transcription factor 6 beta
Database Link:	<a href="#">NP_001129625</a> <a href="#">Entrez Gene 1388 Human</a> <a href="#">Q99941</a>
Background:	The protein encoded by this gene bears sequence similarity with the Creb/ATF subfamily of the bZip superfamily of transcription factors. It localizes to both the cytoplasm and the nucleus. The gene localizes to the major histocompatibility complex (MHC) class III region on chromosome 6.
Synonyms:	CREB-RP; CREBL1; G13
Note:	ATF6B Antibody detects endogenous levels of ATF6B
Protein Families:	Transcription Factors



[View online »](#)

## Product images:



Western blot analysis on COLO205 cell lysate  
using ATF6B Antibody