

Product datasheet for **TA347603**

MEKK3 (MAP3K3) Rabbit Polyclonal Antibody

Product data:

Product Type:	Primary Antibodies
Applications:	WB
Recommended Dilution:	WB: 1:500-1:2000
Reactivity:	Human, Mouse
Host:	Rabbit
Isotype:	IgG
Clonality:	Polyclonal
Immunogen:	The immunogen for anti-MAP3K3 Antibody: A synthesized peptide derived from human MAP3K3
Formulation:	Rabbit IgG in phosphate buffered saline , pH 7.4, 150mM NaCl, 0.02% sodium azide and 50% glycerol. Store at -20?. Stable for 12 months from date of receipt
Concentration:	lot specific
Purification:	Immunogen affinity purified
Conjugation:	Unconjugated
Storage:	Store at -20°C as received.
Stability:	Stable for 12 months from date of receipt.
Predicted Protein Size:	71 kDa
Gene Name:	mitogen-activated protein kinase kinase 3
Database Link:	NP_002392 Entrez Gene 26406 Mouse Entrez Gene 4215 Human Q99759



[View online »](#)

Background:

This gene product is a 626-amino acid polypeptide that is 96.5% identical to mouse Mekk3. Its catalytic domain is closely related to those of several other kinases, including mouse Mekk2, tobacco NPK, and yeast Ste11. Northern blot analysis revealed a 4.6-kb transcript that appears to be ubiquitously expressed. This protein directly regulates the stress-activated protein kinase (SAPK) and extracellular signal-regulated protein kinase (ERK) pathways by activating SEK and MEK1/2 respectively; it does not regulate the p38 pathway. In cotransfection assays, it enhanced transcription from a nuclear factor kappa-B (NFkB)-dependent reporter gene, consistent with a role in the SAPK pathway. Alternatively spliced transcript variants encoding distinct isoforms have been observed.

Synonyms:

MAPKKK3; MEKK3

Note:

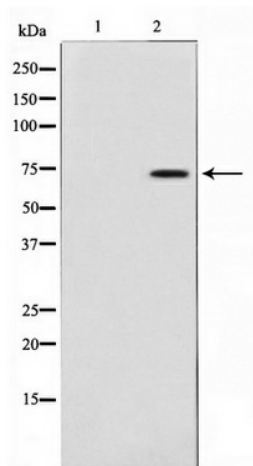
MAP3K3 Antibody detects endogenous levels of MAP3K3

Protein Families:

Druggable Genome, Protein Kinase

Protein Pathways:

GnRH signaling pathway, MAPK signaling pathway, Neurotrophin signaling pathway

Product images:

Western blot analysis on HepG2 cell lysate using MAP3K3 Antibody