

## Product datasheet for **TA347602**

### C1orf57 (NTPCR) Rabbit Polyclonal Antibody

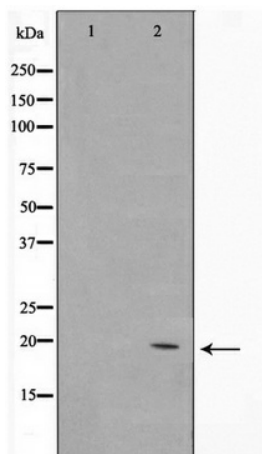
#### Product data:

Product Type:	Primary Antibodies
Applications:	WB
Recommended Dilution:	WB: 1:500-1:2000
Reactivity:	Human
Host:	Rabbit
Isotype:	IgG
Clonality:	Polyclonal
Immunogen:	The immunogen for anti-C1orf57 Antibody: A synthesized peptide derived from human C1orf57
Formulation:	Rabbit IgG in phosphate buffered saline , pH 7.4, 150mM NaCl, 0.02% sodium azide and 50% glycerol. Store at -20?. Stable for 12 months from date of receipt
Concentration:	lot specific
Purification:	Immunogen affinity purified
Conjugation:	Unconjugated
Storage:	Store at -20°C as received.
Stability:	Stable for 12 months from date of receipt.
Predicted Protein Size:	21 kDa
Gene Name:	nucleoside-triphosphatase, cancer-related
Database Link:	<a href="#">NP_115700</a> <a href="#">Entrez Gene 84284 Human</a> <a href="#">Q9BSD7</a>
Background:	C1orf57 Has nucleotide phosphatase activity towards ATP, GTP, CTP, TTP and UTP. Hydrolyzes nucleoside diphosphates with lower efficiency. Belongs to the THEP1 NTPase family. Monomer.
Synonyms:	C1orf57; HCR-NTPase
Note:	C1orf57 Antibody detects endogenous levels of C1orf57
Protein Families:	Protease



[View online »](#)

## Product images:



Western blot analysis on Jurkat cell lysate using C1orf57 Antibody