

## Product datasheet for **TA347601**

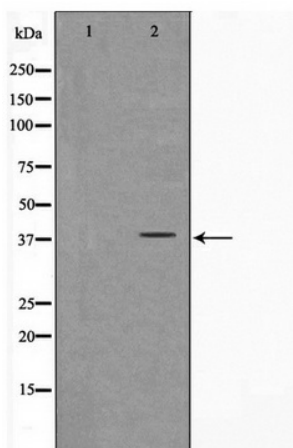
### FKBPL Rabbit Polyclonal Antibody

#### Product data:

Product Type:	Primary Antibodies
Applications:	WB
Recommended Dilution:	WB: 1:500-1:2000
Reactivity:	Human, Mouse, Rat
Host:	Rabbit
Isotype:	IgG
Clonality:	Polyclonal
Immunogen:	The immunogen for anti-FKBPL Antibody: A synthesized peptide derived from human FKBPL
Formulation:	Rabbit IgG in phosphate buffered saline , pH 7.4, 150mM NaCl, 0.02% sodium azide and 50% glycerol. Store at -20?. Stable for 12 months from date of receipt
Concentration:	lot specific
Purification:	Immunogen affinity purified
Conjugation:	Unconjugated
Storage:	Store at -20°C as received.
Stability:	Stable for 12 months from date of receipt.
Predicted Protein Size:	38 kDa
Gene Name:	FK506 binding protein like
Database Link:	<a href="#">NP_071393</a> <a href="#">Entrez Gene 56299 Mouse</a> <a href="#">Entrez Gene 406168 Rat</a> <a href="#">Entrez Gene 63943 Human</a> <a href="#">Q9UIM3</a>
Background:	FKBPL May be involved in response to X-ray. Regulates p21 protein stability by binding to Hsp90 and p21. Forms a ternary complex with CDKN1A/p21 and HSP90AB1/Hsp90.
Synonyms:	DIR1; NG7; WISP39
Note:	FKBPL Antibody detects endogenous levels of FKBPL



[View online »](#)

**Product images:**

Western blot analysis on Jurkat cell lysate using FKBPL Antibody