

## Product datasheet for **TA347598S**

### SHARP1 (BHLHE41) Rabbit Polyclonal Antibody

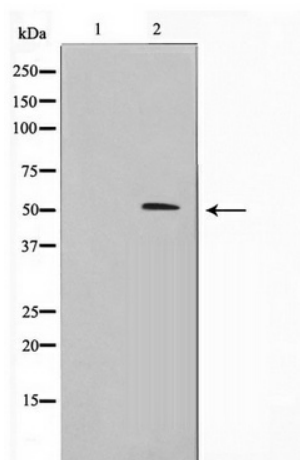
#### Product data:

Product Type:	Primary Antibodies
Applications:	WB
Recommended Dilution:	WB: 1:500-1:2000
Reactivity:	Human, Mouse, Rat
Host:	Rabbit
Isotype:	IgG
Clonality:	Polyclonal
Immunogen:	The immunogen for anti-BHLHB3 Antibody: A synthesized peptide derived from human BHLHB3
Formulation:	Rabbit IgG in phosphate buffered saline , pH 7.4, 150mM NaCl, 0.02% sodium azide and 50% glycerol. Store at -20?. Stable for 12 months from date of receipt
Concentration:	lot specific
Purification:	Immunogen affinity purified
Conjugation:	Unconjugated
Storage:	Store at -20°C as received.
Stability:	Stable for 12 months from date of receipt.
Predicted Protein Size:	50 kDa
Gene Name:	basic helix-loop-helix family member e41
Database Link:	<a href="#">NP_110389</a> <a href="#">Entrez Gene 79362 Mouse</a> <a href="#">Entrez Gene 117095 Rat</a> <a href="#">Entrez Gene 79365 Human</a> <a href="#">Q9C0J9</a>
Background:	BHLHB3 May be a transcriptional repressor that represses both basal and activated transcription. Homodimerize.
Synonyms:	BHLHB3; DEC2; hDEC2; SHARP1
Note:	BHLHB3 Antibody detects endogenous levels of BHLHB3
Protein Families:	Transcription Factors
Protein Pathways:	Circadian rhythm - mammal



[View online »](#)

## Product images:



Western blot analysis on RAW264.7 cell lysate using BHLHB3 Antibody