

Product datasheet for **TA347597**

Nucleophosmin (NPM1) Rabbit Polyclonal Antibody

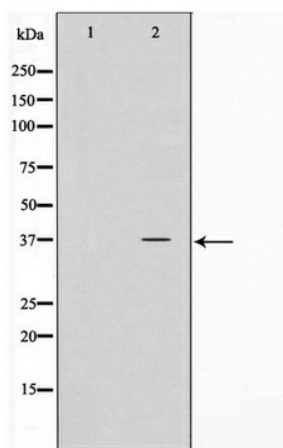
Product data:

Product Type:	Primary Antibodies
Applications:	WB
Recommended Dilution:	WB: 1:500-1:2000
Reactivity:	Human, Mouse, Rat
Host:	Rabbit
Isotype:	IgG
Clonality:	Polyclonal
Immunogen:	The immunogen for anti-NPM Antibody: A synthesized peptide derived from human NPM
Formulation:	Rabbit IgG in phosphate buffered saline , pH 7.4, 150mM NaCl, 0.02% sodium azide and 50% glycerol. Store at -20?. Stable for 12 months from date of receipt
Concentration:	lot specific
Purification:	Immunogen affinity purified
Conjugation:	Unconjugated
Storage:	Store at -20°C as received.
Stability:	Stable for 12 months from date of receipt.
Predicted Protein Size:	37 kDa
Gene Name:	nucleophosmin (nucleolar phosphoprotein B23, numatrin)
Database Link:	NP_954654 Entrez Gene 18148 MouseEntrez Gene 25498 RatEntrez Gene 4869 Human P06748
Background:	NPM1 a nucleolar protein associated with nucleolar ribonucleoprotein structures and that binds single-stranded nucleic acids. Is a major component of template activating factor (TAF)-III. It plays a role in controlling centrosome duplication, and may function in the assembly and/or transport of the ribosome. Two alternatively spliced isoforms have been described.
Synonyms:	B23; NPM
Note:	NPM Antibody detects endogenous levels of NPM
Protein Families:	Druggable Genome, Stem cell - Pluripotency, Transcription Factors



[View online »](#)

Product images:



Western blot analysis on HeLa cell lysate using NPM Antibody