

Product datasheet for **TA347593**

DUS2L (DUS2) Rabbit Polyclonal Antibody

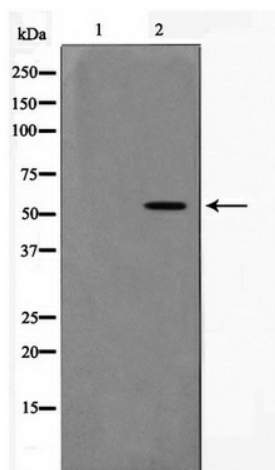
Product data:

Product Type:	Primary Antibodies
Applications:	WB
Recommended Dilution:	WB: 1:500-1:2000
Reactivity:	Human, Mouse
Host:	Rabbit
Isotype:	IgG
Clonality:	Polyclonal
Immunogen:	The immunogen for anti-DUS2L Antibody: A synthesized peptide derived from human DUS2L
Formulation:	Rabbit IgG in phosphate buffered saline , pH 7.4, 150mM NaCl, 0.02% sodium azide and 50% glycerol. Store at -20?. Stable for 12 months from date of receipt
Concentration:	lot specific
Purification:	Immunogen affinity purified
Conjugation:	Unconjugated
Storage:	Store at -20°C as received.
Stability:	Stable for 12 months from date of receipt.
Predicted Protein Size:	55 kDa
Gene Name:	dihydrouridine synthase 2
Database Link:	NP_001258691 Entrez Gene 66369 Mouse Entrez Gene 54920 Human Q9NX74
Background:	DUS2L Dihydrouridine synthase. Catalyzes the synthesis of dihydrouridine, a modified base found in the D-loop of most tRNAs. Belongs to the dus family. Dus2 subfamily.
Synonyms:	DUS2L; SMM1; URLC8
Note:	DUS2L Antibody detects endogenous levels of DUS2L



[View online »](#)

Product images:



Western blot analysis on RAW264.7 cell lysate
using DUS2L Antibody