

## Product datasheet for **TA347592**

### CD147 (BSG) Rabbit Polyclonal Antibody

#### Product data:

Product Type:	Primary Antibodies
Applications:	WB
Recommended Dilution:	WB: 1:500-1:2000
Reactivity:	Human, Mouse, Rat
Host:	Rabbit
Isotype:	IgG
Clonality:	Polyclonal
Immunogen:	The immunogen for anti-CD147 Antibody: A synthesized peptide derived from human CD147
Formulation:	Rabbit IgG in phosphate buffered saline , pH 7.4, 150mM NaCl, 0.02% sodium azide and 50% glycerol. Store at -20?. Stable for 12 months from date of receipt
Concentration:	lot specific
Purification:	Immunogen affinity purified
Conjugation:	Unconjugated
Storage:	Store at -20°C as received.
Stability:	Stable for 12 months from date of receipt.
Predicted Protein Size:	48,36 kDa
Gene Name:	basigin (Ok blood group)
Database Link:	<a href="#">NP_940993</a> <a href="#">Entrez Gene 12215 Mouse</a> <a href="#">Entrez Gene 25246 Rat</a> <a href="#">Entrez Gene 682 Human</a> <a href="#">P35613</a>
Background:	BSG Plays pivotal roles in spermatogenesis, embryo implantation, neural network formation and tumor progression. Stimulates adjacent fibroblasts to produce matrix metalloproteinases (MMPs). May target monocarboxylate transporters SLC16A1, SLC16A3 and SLC16A8 to plasma membranes of retinal pigment epithelium and neural retina. Seems to be a receptor for oligomannosidic glycans. In vitro, promotes outgrowth of astrocytic processes. Enriched on the surface of tumor cells. Up-regulated in gliomas. Its expression levels correlate with malignant potential of the tumor.
Synonyms:	5F7; CD147; EMMPRIN; OK; TCSF

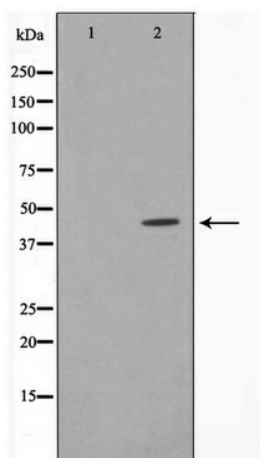


[View online »](#)

**Note:** CD147 Antibody detects endogenous levels of CD147

**Protein Families:** Druggable Genome, ES Cell Differentiation/IPS, Transmembrane

**Product images:**



Western blot analysis on HuvEc cell lysate using CD147 Antibody