

Product datasheet for **TA347591**

ZNF436 Rabbit Polyclonal Antibody

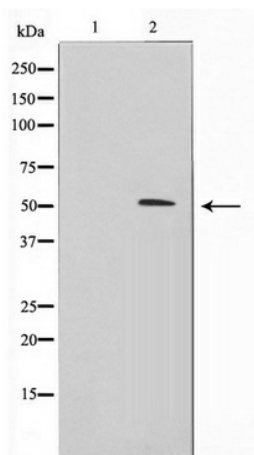
Product data:

Product Type:	Primary Antibodies
Applications:	WB
Recommended Dilution:	WB: 1:500-1:2000
Reactivity:	Human
Host:	Rabbit
Isotype:	IgG
Clonality:	Polyclonal
Immunogen:	The immunogen for anti-ZNF436 Antibody: A synthesized peptide derived from human ZNF436
Formulation:	Rabbit IgG in phosphate buffered saline , pH 7.4, 150mM NaCl, 0.02% sodium azide and 50% glycerol. Store at -20?. Stable for 12 months from date of receipt
Concentration:	lot specific
Purification:	Immunogen affinity purified
Conjugation:	Unconjugated
Storage:	Store at -20°C as received.
Stability:	Stable for 12 months from date of receipt.
Predicted Protein Size:	50 kDa
Gene Name:	zinc finger protein 436
Database Link:	NP_085137 Entrez Gene 80818 Human Q9C0F3
Background:	ZNF436 May be a transcriptional repressor. Belongs to the krueppel C2H2-type zinc-finger protein family.
Synonyms:	Zfp46; ZNF
Note:	ZNF436 Antibody detects endogenous levels of ZNF436
Protein Families:	Transcription Factors



[View online »](#)

Product images:



Western blot analysis on HeLa cell lysate using ZNF436 Antibody