

## Product datasheet for **TA347590**

### ATG4B Rabbit Polyclonal Antibody

#### Product data:

Product Type:	Primary Antibodies
Applications:	WB
Recommended Dilution:	WB: 1:500-1:2000
Reactivity:	Human, Mouse
Host:	Rabbit
Isotype:	IgG
Clonality:	Polyclonal
Immunogen:	The immunogen for anti-ATG4B Antibody: A synthesized peptide derived from human ATG4B
Formulation:	Rabbit IgG in phosphate buffered saline , pH 7.4, 150mM NaCl, 0.02% sodium azide and 50% glycerol. Store at -20?. Stable for 12 months from date of receipt
Concentration:	lot specific
Purification:	Immunogen affinity purified
Conjugation:	Unconjugated
Storage:	Store at -20°C as received.
Stability:	Stable for 12 months from date of receipt.
Predicted Protein Size:	44 kDa
Gene Name:	autophagy related 4B cysteine peptidase
Database Link:	<a href="#">NP_847896</a> <a href="#">Entrez Gene 66615 Mouse</a> <a href="#">Entrez Gene 23192 Human</a> <a href="#">Q9Y4P1</a>

**Background:** Autophagy is the process by which endogenous proteins and damaged organelles are destroyed intracellularly. Autophagy is postulated to be essential for cell homeostasis and cell remodeling during differentiation, metamorphosis, non-apoptotic cell death, and aging. Reduced levels of autophagy have been described in some malignant tumors, and a role for autophagy in controlling the unregulated cell growth linked to cancer has been proposed. This gene encodes a member of the autophagin protein family. The encoded protein is also designated as a member of the C-54 family of cysteine proteases. Two transcript variants that encode different isoforms were identified through sequence analysis.



[View online »](#)

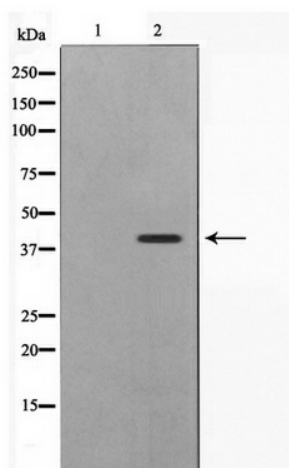
**Synonyms:** APG4B; AURL1

**Note:** ATG4B Antibody detects endogenous levels of ATG4B

**Protein Families:** Protease

**Protein Pathways:** Regulation of autophagy

**Product images:**



Western blot analysis on Jurkat cell lysate using ATG4B Antibody