

## Product datasheet for **TA347588**

### RB associated KRAB repressor (RBAK) Rabbit Polyclonal Antibody

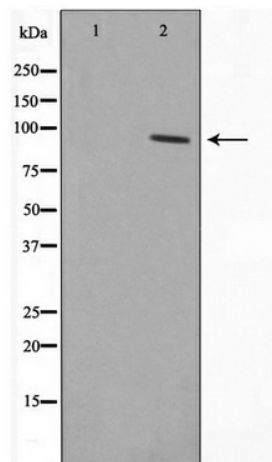
#### Product data:

Product Type:	Primary Antibodies
Applications:	WB
Recommended Dilution:	WB: 1:500-1:2000
Reactivity:	Human, Mouse
Host:	Rabbit
Isotype:	IgG
Clonality:	Polyclonal
Immunogen:	The immunogen for anti-RBAK Antibody: A synthesized peptide derived from human RBAK
Formulation:	Rabbit IgG in phosphate buffered saline , pH 7.4, 150mM NaCl, 0.02% sodium azide and 50% glycerol. Store at -20?. Stable for 12 months from date of receipt
Concentration:	lot specific
Purification:	Immunogen affinity purified
Conjugation:	Unconjugated
Storage:	Store at -20°C as received.
Stability:	Stable for 12 months from date of receipt.
Predicted Protein Size:	85 kDa
Gene Name:	RB associated KRAB zinc finger
Database Link:	<a href="#">NP_001191385</a> <a href="#">Entrez Gene 57782 Mouse</a> <a href="#">Entrez Gene 57786 Human</a> <a href="#">Q9NYW8</a>
Background:	RBAK May repress E2F-dependent transcription. May promote AR- dependent transcription. Belongs to the krueppel C2H2-type zinc-finger protein family. Interacts with AR and RB1. May also interact with other nuclear hormone receptors such as NR3C1/GR.
Synonyms:	ZNF769
Note:	RBAK Antibody detects endogenous levels of RBAK
Protein Families:	Druggable Genome, Transcription Factors



[View online »](#)

## Product images:



Western blot analysis on HepG2 cell lysate using RBAK Antibody